



S.D. Mator

Published by ASPE San Diego Chapter #4

October 2019

Volume 17, Issue 10

MEETING AT A GLANCE

DATE: TUESDAY, OCTOBER 22, 2019

TIME: 4:30 PM—Registration in the Lobby
5:00 PM—Site Tour Begins
6:00 PM—Dinner Registration at Hotel
6:30 PM—Dinner Served/Program follows

SITE TOUR OF FUTURE OF SURGERY CENTER AND HYBRID OPERATING SUITE

SITE TOUR LOCATION:

Telemedicine Building at the end of Osler Ln, off of Gilman Dr. *Parking available in the Osler Parking Structure on Gilman Dr.* [UCSD Campus Map](#)

SITE TOUR HOSTS & DINNER SPEAKERS:

Mark Rowland & Rod Barker

UCSD Facilities Design & Construction

and a Representative from Align Builders, Inc.

DINNER LOCATION:

Sheraton Hotel La Jolla

3299 Holiday Court, La Jolla, CA 92037

South of La Jolla Village Drive & West of I-5. *Parking is available in the lower lot on the north side of the hotel.*

Meal Choices: Chicken, Salmon or Vegetarian Plate

**COST: Members & Guests – \$45/person
Students (discount) – \$30/person**

Cancellations must be received by NOON on Monday, October 21st or no shows will be billed.

RSVP:  <http://evite.me/jC828QwXkm>

MEMBERS AND GUESTS UTILITIZING THE
EVITE RESERVATION PLATFORM
**MUST PROVIDE THE INDIVIDUAL'S NAME AND
COMPANY NAME FOR EVERY REGISTRANT.**

—OR: **Paul Chang CPE - 619.513.4399 (cell)**
aspechapter4@outlook.com

TI for Top-of-the-Line Surgical Centers: A Look Back and A Leap Forward for UCSD's Future of Surgery Center

by Lisa Thibodeaux, Construction Experts, Inc.
ASPE San Diego Chapter #4 Programs Chair

Improvements to medical facilities require a lot of collaboration among trades, practitioners, and a lot of funding. The tenant improvements for the Future of Surgery Center at UCSD is no exception.

“This expansion is an extraordinary opportunity for our microvascular surgeons and those who practice catheter-based endoluminal vascular procedures,” says Dr. Bryan Clary, chair of the Department of Surgery. “The CFS will be one of only a few surgical simulation training facilities in the world to have a hybrid OR for training, research, and device development in the endoluminal surgery.”

The Center for the Future of Surgery, LEED Gold, opened its doors to residents in training on the UCSD campus in 2011. Since then, over 20,000 medical students, residents, surgeons, nurses and medical industry partners have received training at this state-of-the-art surgical training center.

[\(cont'd on pg 3\)](#)

INSIDE THIS ISSUE ...

October Program Article	1,3-4
Message from the Chapter President, Paul Chang, CPE	2
Meet the Members of Your Chapter Board: Edna Rodriguez	5
Meet the New Members of Your Chapter: AJ Ducusin	5
Ask a CPE ... Q&A with Dan Kilcoyne CPE	6
Spotlight on Member-Firms: HERC RENTALS INC.	7
Become an ASPE Newsletter Sponsor or Advertiser	8
ASPE Membership, Mission Statement & Code of Ethics	8
San Diego Chapter Calendar of Events.....	9
2019 Officers, Board of Directors, Committees	10
Contact ASPE	10

ATTACHMENTS:

UCSD Campus Map for October 22nd Site Tour [11](#)

WHY ASPE? — 3 Steps to Annual Renewal — Certificate

Programs + Online Classes — ASPE Career Center [12-15](#)

Message from the Chapter President by Paul M. Chang, CPE



Paul M. Chang CPE

Dear Friends and Members,

I would like to take this opportunity to thank everyone who came out to support our last ASPE 13th Annual Golf Tournament at Admiral Baker last month. The entire event was truly enjoyable. ASPE appreciates the time of the guest golfers and sponsors. The audience turnout was great and excited. Thank you for supporting our scholarship program.

In today's construction market, **Networking** often begins with a single point of common ground. The most obvious is a professional affiliation, but some people find effective networking opportunities in a college alumni group, a church or synagogue social group, or a private club.

For professionals, the best networking opportunities may occur at trade shows, events, seminars, and conferences, which are designed to attract a large crowd of like-minded individuals.

Networking helps a professional keep up with current events in the field and develops relationships that may boost future business or employment prospects. Needless to say, it also provides opportunities to help other people find jobs, make connections and catch up on the news.

I and my Chapter Board of Directors look forward to welcoming you all at ASPE, an organization where you will not only polish your professional skills but also become a better Estimator.

A handwritten signature in blue ink that reads "Paul M. Chang" with a stylized flourish at the end.

Paul M. Chang, CPE

ASPE San Diego Chapter #4 President



TI for a Top-of-the-Line Surgical Center: A Look Back and A Leap Forward for UCSD's Future of Surgery Center

[cont'd from pg 1](#)

Director of the Center and Chief of the Division of Minimally Invasive Surgery Dr. Santiago Horgan says, "In surgery today, technology is evolving, techniques are changing, new devices are coming out all the time. There are still many operations that are done open because surgeons don't have the skills. There is a huge need for simulated training."

The high-end finishes, LED lighting systems, and overall design aids in delivering a futuristic atmosphere. Upon entry, medical professionals know the space they are entering was designed with the future of medicine in mind.

Since 2011 staff medical professionals have been envisioning the next chapter of the Center for the Future of Surgery. The newest addition involved demolishing an unfinished shell to build up the tenant improvement. Some of the features of the TI designed by CallisonRTKL include:

- Terrazzo floor
- Corian walls
- LED lighting systems
- Zeego C-Arm used for robotic surgeries
- Multi-taction Touch Screen Display
- Vacuum Extraction System

OSHPD and non-OSHPD elements are included in the improvements. Teaching space, storage and research space were included alongside a Microsurgical Lab and a Hybrid OR Suite.

The Microsurgical Suite Advances and Details

This Microsurgical Suite is designed to support medical students, residents, and medical staff in training in the new procedures of skull-based surgery, vascular surgery, neurosurgery, and plastic surgery.

Each of the 14 workstations and 1 prop station are equipped with:

- Mounted microscopes
- Snorkels, stents that enable blood flow to otherwise inaccessible arteries
- Vacuum system for suctioning fluid, draining wounds, lung and chest drainages, collection and suction of non-body fluids
- Touchscreen computers
- Air needle
- Extraction arm
- Faucet with foot pedals
- Medical air
- Surgical drive system
- Camera
- Camera with endoscopy control chair

One floor stand microscope will be available for collective use.

A unique 260-pound fluid waste management system, Dornoch, is newly installed. This is the mechanism that cleans the fluid containers with a water, enzyme, bleach bath.



[\(cont'd on pg 4\)](#)

TI for a Top-of-the-Line Surgical Center: A Look Back and A Leap Forward for UCSD's Future of Surgery Center

[cont'd from pg 3](#)

This Microsurgical Suite is in addition to the 22 surgical stations available for teaching purposes. The FSC specializes in training in:

- Robotics: Two da Vinci® Surgical Systems in the lab
- Simulators: Symbionix™ laparoscopy and endoscopy
- Laparoscopic Surgery

Hybrid Operating Room (OR)

The Hybrid Operating Room offers an advanced procedural space that combines a traditional operating room with an image-guided interventional suite. This combination allows for highly complex, advanced surgical procedures with specialists working collaboratively to solve advanced medical traumas (Steris Healthcare).

Because the FSC offers training in diverse specialties, including:

- Cardiothoracic
- Colorectal
- ENT
- Gastroenterology
- General surgery
- Neurosurgery
- Orthopedics
- Trauma
- Urology
- Vascular

the Hybrid OR will be a highly utilized feature.

Mark Rowland, Architect and Program Manager for UCSD, says, "The interior construction is remarkable as well. The amount of building services and systems, including conduit, pipe, electrical, ductwork, etc., behind and in the walls and ceilings (as well as under the slab) is incredible."

It is no wonder that with all these state-of-the-art systems multiplied by 14 + a prop station and teaching station, the total cost for this TI amounts to \$3.3 million for 1,800 GSF.

As a structure, the Future of Surgery Center is 100,000 GSF and \$50 million.

Subcontractors contributing to the project include:

- Fluid Sound
- Fuller Electric
- University Mechanical
- Stryker
- Siemens
- KM Consulting Group LLC
- Randall Lamb Associates
- KPFF

ASPE October Meeting Details

Join ASPE San Diego #4 on Tuesday, October 22 for a tour of the Future of Surgery Center's tenant improvements. The tour will be led by UCSD architects Mark Rowland and Rod Barker.

Site Tour Location: Telemedicine Building at the end of Osler Lane, off of Gilman Drive. *Parking available in the Osler Parking Structure on Gilman Drive.* [UCSD Campus Map](#)

Registration is at 4:30 p.m. Tour is 5:00-6:00 p.m. Dinner at 6:30 p.m.

We will convene thereafter at the [Sheraton Hotel La Jolla](#) and dine on seared salmon, chicken, or vegetarian entree. Cost is \$45 for members, \$30 for students. *For those not attending the site tour, dinner registration begins at 6:00 pm.*

Meeting at a glance information can be found on [page 1](#).

Lisa Thibodeaux, Construction Experts, Inc.
ASPE San Diego Chapter #4 Programs Chair



[Click here](#) for more project information from Skidmore, Owings & Merrill LLP.



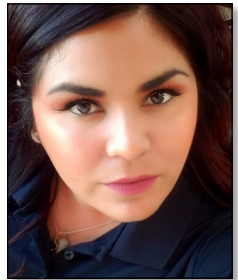
Mark Rowland

Meet the Members of Your Chapter Board ...

Focus on EDNA RODRIGUEZ

Territory Representative—Herc Rentals

Edna Rodriguez joined the construction industry in 2001. She is currently a Territory Rep at Herc Rentals.



Edna Rodriguez

The company is a premier, full-service equipment rental firm, providing customers the equipment, services and solutions they need to achieve optimal performance safely, efficiently and effectively.

Edna likes to get involved within the Industry. She is on the board of directors for ASPE and NAWIC and is also a member of the WCC association. She enjoys learning about the industry and interacting with people who are just as passionate about the industry.

Through her involvement, she has continued to learn and grow. ■

Meet the New Members of Your Chapter ...

Focus on AJ DUCUSIN

Estimator—West Coast Air Conditioning Co., Inc.



AJ Ducusin

AJ Ducusin initially started his construction career at Core Consulting Group in 2014, and got his first estimating position at Nuera Contracting in 2017, and has been working as an Estimator since.

After graduating from San Francisco State University with a BA in Political Science, his intent was to become a lawyer. After working at a law firm for 7 years as a Paralegal, he decided to switch careers and take as many classes as he could to learn construction, from Blueprint Reading to Project Management classes at Southwestern Community College.

Recently, AJ took the AEP test from ASPE and is currently working for West Coast Air in El Cajon. ■

Ask a CPE: Q & A

Responses from Dan Kilcoyne, CPE—California Sheet Metal



Dan Kilcoyne CPE

1. When did you complete the CPE certification?

I completed my certification in September 2018.

2. What made you pursue CPE certification?

I wanted to take more seriously my proficiency within Estimating.

The certification process gave me the opportunity to demonstrate current competencies, and was also invaluable in revealing where I needed further development.

3. What would you say the benefits are of having the CPE certification?

Regardless of where I work, it seemed fitting to have independent recognition of my standing within the Estimating Community. In return for the effort, certification has afforded me confidence in my current position and optimism in my career moving forward.

4. What do you suggest to other estimators regarding getting certified?

I would say anyone who has chosen Estimating as their career should strongly consider going through the CPE process. While challenging, even those with numerous other obligations can successfully achieve certification. Many within ASPE are available to help you through the process as well.

5. Brief description of your certification process, estimating life and/or any other comments?

In April 2018 I started the CPE certification process. Maintaining a balance with family life, career responsibilities, and certification studies extended the completion until September 2018. Through the help of several fellow ASPE members, I was able to write an accepted Technical Paper, and pass the General Knowledge and Discipline Specific exams. I can honestly say that going through the certification process was well worth the result.

If you have any questions, please contact Dan Kilcoyne CPE (dan@kilcoyne.me).



Herc Rentals offers 20' and 40' Containers.

[Click here](#) to reference Herc Rentals' New Solutions Guide.

Herc Rentals Inc. is a premier, full-service equipment rental firm — providing their customers the equipment, services and solutions they need to achieve optimal performance safely, efficiently and effectively.

With more than 50 years of equipment rental expertise, approximately 4,800 employees and approximately 275 company-operated locations primarily in the United States and Canada, Herc Rentals serves a broad range of customer markets, including large and small companies in construction; industrial customers such as large industrial manufacturing plants, refineries and petrochemical operations; and other



customers such as governmental entities and government contractors, disaster recovery and remediation firms, infrastructure, railroads, utility operators, individual homeowners, entertainment production companies, agricultural producers, special event management and facility management firms.

A pioneer of the equipment rental industry, Herc Rentals continues to evolve and grow through technological innovations, expanded product offerings and value-added services and consultative solutions to support its customers' projects.

Become an ASPE Newsletter Corporate Sponsor or Advertiser

CORPORATE SPONSOR—\$400/yr Includes following benefits:

- Sponsor Recognition in 12 Monthly Newsletters and on Chapter Website, GIFS Wheel
- Full-Page Sponsor Profile in 1 Issue
- Hot Link to Sponsor's Website or Designed Email Address

INDIVIDUAL BUSINESS CARD AD—\$200/yr

EMPLOYMENT AD:

**\$70 /ad in 1 issue; \$100/ad on website
FREE TO ASPE MEMBERS!**

FOR MORE INFO—CONTACT:

Treasurer: **FRANK YOUNG FCPE**
Cell 619.980.4025; pancho77@cox.net

P.R. Chair: **JOE HERNANDEZ**
619.717.1814;
joehernandez777@yahoo.com



ASPE MISSION STATEMENT

The American Society of Professional Estimators
is dedicated to the promotion of
the profession of estimating and to
the benefit of the construction industry.

[Click here for ASPE's CODE OF ETHICS.](#)

ASPE Membership

An accurate cost estimate is the first of many key components of a successful construction project. Plan interpretation, labor and material costs, scheduling costs, and level of difficulty recognition are a fraction of the skills necessary to become a successful estimator.

Why join the American Society of Professional Estimators? ASPE is the most recognized and credentialed group of construction cost professionals in our nation's construction industry. ASPE provides education, industry information, and fellowship to all levels of our members. It is made up of professionals in the following three member classifications.

- 1- **Estimator:** Shall be an active Construction Estimator in one or more of the construction estimating disciplines.
- 2- **Affiliate Member:** Shall be employed in a construction-related field.
- 3- **Student:** Shall be a full-time student actively pursuing a curriculum leading to a degree or certificate in a construction-related field.

One of the ultimate goals of a member in ASPE is to achieve status as a "Certified Professional Estimator," otherwise known as "CPE." CPE status is recognized by Builders, Government Agencies, joehernandez777@yahoo.com

Developers, and many other Corporate entities as the highest level of qualification as an estimator. Educational training is available to become part of this elite group of professionals.

ASPE San Diego Chapter #4 is perennially recognized as one of the top chapters of the nation's 50 chapters. The local chapter meets on the third Tuesday of each month. This general membership meeting offers education and insight into our industry. Each membership meeting is highlighted by presentations and guest speakers, with information pertinent to our ever-changing industry.


If you would like to become part of this exciting group of professionals, please contact Venu Dorapally CPE at 858.947.5197 or:

venuarch@gmail.com

San Diego Chapter #4 Calendar of Events



◆ **Tuesday, October 22, 2019 (4:30 PM Registration)**
ASPE San Diego Monthly Site Tour & Dinner Meeting

Program: Future of Surgery Center
Site Tour Location: UCSD Medical Center, La Jolla
 Telemedicine Building at the end of Osler Lane, off of Gilman Drive
Parking available in the Osler Parking Structure on Gilman Drive

Site Tour Hosts & Dinner Meeting Speakers: Mark Rowland and Rod Barker
UCSD Facilities Design and Construction and Align Builders' Representative
Dinner Location: Sheraton Hotel La Jolla
3299 Holiday Court, La Jolla (858.453.5500)
South of La Jolla Village Drive and West of I-5. Parking available in the lower lot on the north side of the hotel.

◆ **Tuesday, November 19, 2019 (4:15 PM Registration)**
ASPE San Diego Monthly Site Tour & Dinner Meeting

Program: Site Tour of California Sheet Metal Office and Fabrication Facility
Site Tour Hosts: California Sheet Metal Representatives
In-house Speaker: Dan Kilcoyne, CPE
Dinner: Catered by Phil's BBQ

◆ **Friday, December 13, 2019 (7:00 AM Registration)**
Joint ASPE/CSI San Diego Holiday Breakfast Meeting

Program: Economic Forecast for 2020
Speaker: Alan Nevin, Director of Economic & Market Research—Xpera Group
Location: Admiral Baker Golf Course Clubhouse
2400 Admiral Baker Way, San Diego
(Off Friars Road in Mission Valley)

◆ **Tuesday, January 21, 2020 (4:30 PM Registration)**
ASPE San Diego Monthly Dinner Meeting

Program: What Estimator Need to Know About Construction Safety Issues
Speaker: Steve Samuelson
Construction Safety Program Manager
San Diego County Regional Airport Authority
Location: To be determined

◆ **Tuesday, February 18, 2020 (4:30 PM Registration)**
ASPE San Diego Monthly Dinner Meeting

Program: To be determined
Speaker: To be determined
Location: Balfour Beatty Training Center
10620 Treena Street, Ste 300, San Diego
East of I-15, South of Mira Mesa Boulevard
Dinner: Catered Dinner to be determined

◆ **Tuesday, March 17, 2020 (4:15 PM Registration)**
ASPE San Diego Monthly Dinner Meeting

Program: Ethics Presentation to be determined
Speaker: To be determined
Location: To be determined

◆ **Tuesday, April 21, 2020 (4:30 PM Registration)**
ASPE San Diego Monthly Site Tour & Dinner Meeting

Tentative Program: Hoover High School New Theater, Classroom and Administration Building
Location: 4474 El Cajon Boulevard, San Diego
Hosts and Dinner Meeting Speakers: Representatives from Balfour Beatty
In-House Speaker: Paul Chang, CPE



Directory of San Diego Chapter #4 Officers and Directors



TECHNICAL COMMITTEES:

- Certification:**
Dan Kilcoyne, CPE
- Education:**
Steve Schraibman, CPE
- Standards:**
OPEN
- STANDING COMMITTEES:**
- Chapter Awards**
Frank Young, FCPE
- National Awards**
OPEN
- Nominations:**
OPEN
- Communications—
Website:**
Paul Chang, CPE
- Communications—
Newsletter:**
Alicia Kovacs
- Finance:**
Frank Young, FCPE
- Ways & Means:**
David Luhm, E
- Public Relations/
Calendar:**
Joe Hernandez, E
- Membership:**
Venu Dorapally, CPE
- Programs:**
Lisa Thibodeaux
- OTHER COMMITTEES:**
- Ethics:**
Dan Luckhardt, CPE
- Mentoring:**
Frank Young, FCPE
- Scholarships:**
Dan Luckhardt, CPE
- Outreach:**
Paul Chang, CPE

2019-20 Chapter Officers

Office	Officer	Phone	Fax	Email
President	Paul Chang, CPE Balfour Beatty	858.635.7464 619.513.4399-C		aspechapter4@outlook.com
1st Vice-President	Steve Schraibman, CPE Arcor-Inc.	858.481.4494 619.252.4941-C	858.481.4146	steve@arcor-inc.com
2nd Vice-President	Dan Luckhardt, CPE Swinerton Builders	619.291.4600 858.342.8017-C		dluckhardt@swinerton.com
3rd Vice-President	OPEN			
Secretary	David Luhm, E Countywide Mechanical	760.238.3355-C		dluhm@countywidems.com
Treasurer	Frank E. Young, FCPE Ramos Consulting Svcs	619.440.5517 619.980.4025-C	619.401.7545	pancho77@cox.net
Immediate Past President	Michael Moyers, CPE Best Interiors, Inc.	858.737.7316 619.843.6962-C	858.737.7317	michael.moyers@bestinteriors.net
Executive Administrator	Margy Ashby	619.749.1890 619.302.3257-C	619.839.3817	info@aspechapter4.org asped4@gasvcs.net

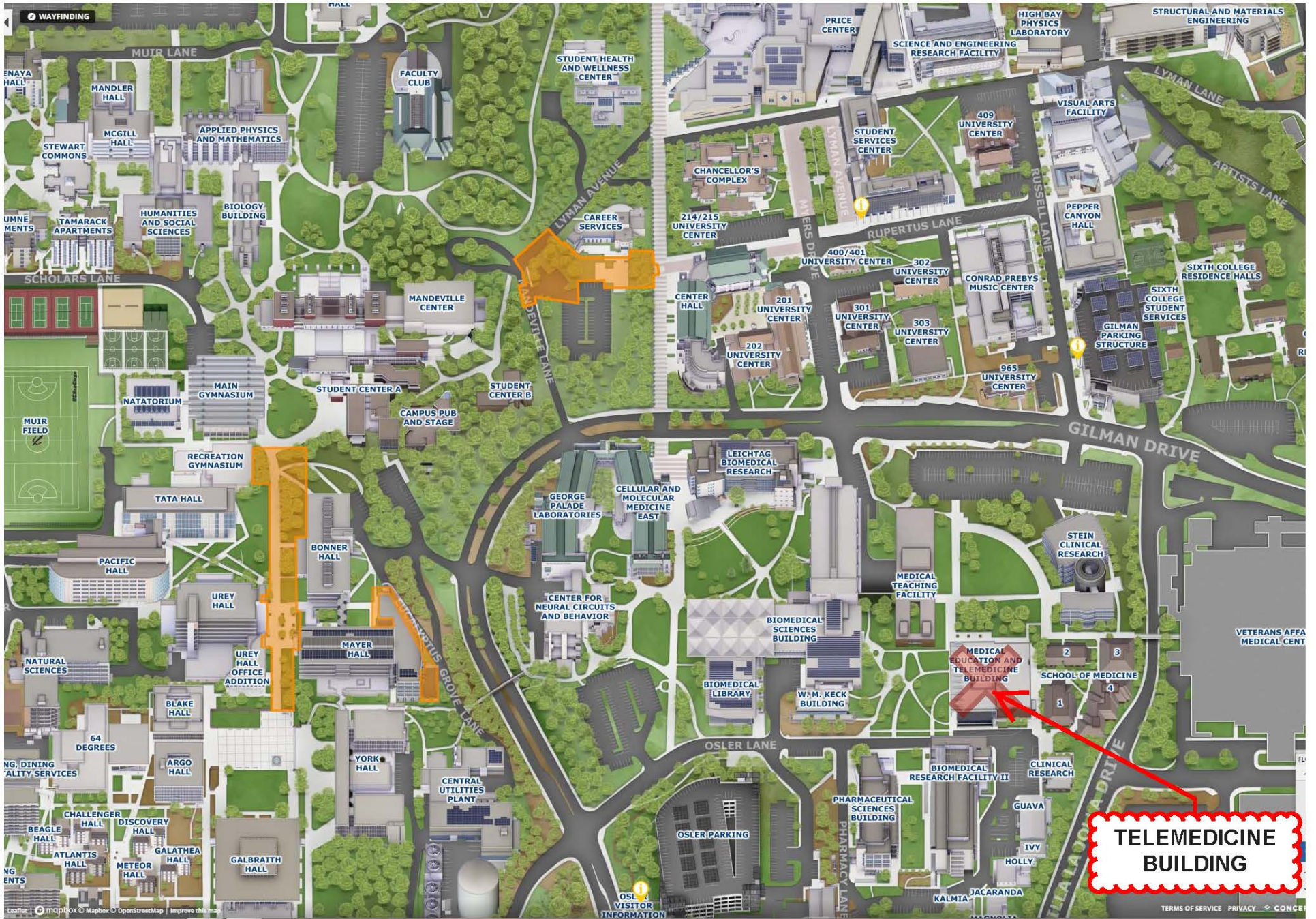
2019-20 Chapter Board of Directors

Director	Phone	Fax	Email
Venu Dorapally, CPE Kitchell Contractors, Inc.	858.947.5197		venuarch@gmail.com
Joe Hernandez, E Kitchell Contractors, Inc.	619.717.1814		joehernandez777@yahoo.com
Dan Kilcoyne, CPE California Panel Systems	619.562.7010		dan@calpanelsystems.com
Alicia Kovacs Nielsen Construction Ca.	619.820.3057-C	619.795.0042	akovacs@nielsencc.com
Tori Penland United Site Services Inc.	760.705.9728 x59728 760.443.0754-C		victoria.penland@unitedsiteservices.com
Lorena Quintero Willscot	619.710.8468 x44403 619.787.1693-C		lorena.quintero@willscot.com
Edna Rodriguez Herc Rentals Inc.	877.690.8365 858.253.9421-C		edna.rodriquez@hercrentals.com

CONTACT ASPE SAN DIEGO CHAPTER

Phone: 619.749.1890 Email: info@aspechapter4.org

Chapter Website: aspechapter4.org National Website: aspenational.org



TELEMEDICINE BUILDING



AMERICAN SOCIETY
OF PROFESSIONAL
ESTIMATORS
SAN DIEGO CHAPTER #4



WHY ASPE?

The Professional Network and Thought Leadership of Estimators worldwide.

The American Society of Professional Estimators serves residential, commercial and civil construction estimators by providing Education, Fellowship, and the opportunity for Professional Development. The proper Education, Ethics, Standards, Certification and Fellowship lead to the ultimate goal of Professionalism.



Share, Collaborate, Exchange and Grow.

*If you submit numbers on bid day,
then you belong in ASPE.*

JOIN ASPE TODAY!

ASPE CORE VALUES

EDUCATION

PROFESSIONALISM

FELLOWSHIP

**ASPE SAN DIEGO
CHAPTER # 4**

www.aspechapter4.org



3 Steps to Annual Renewal

Step 1 = PDUs

Professional Development Units must be earned + logged within the calendar year. Submit documentation, in PDF or DOC format, to back-up journal entry.

CPE = 24 PDUs
AEP = 12 PDUs

To access the PDU Journal, sign into your ASPE Profile. PDU Reference Table found on the Certification page.

CPE = Certification > CPE Applications + Forms > More Information
AEP = Certification > Certification Program (AEP) > More Information

Step 2 = Application

Certificate holders are required to complete the Renewal Application from within their profile.

CPE = Certification > CPE Applications + Forms > More Information
AEP = Certification > Certification Program (AEP) > More Information

Step 3 = Fees

Renewal Fees are paid within the online application, available at ASPEnational.org / Certification.

CPE + AEP Renewal Fees
ASPE Member = \$ 50
Non-Member = \$350



Certification Cycle = January 1 – December 31





Certificate Programs + Online Classes

Certificate Programs

Construction Estimating

Civil Sitework Construction

Construction Supervision - Civil Sitework

Construction Supervision

Construction Practices

Construction Project Management

Construction Supervision - Building

Self-Paced Courses

101 Introduction to Construction Estimating

102 Essential Construction Math

Instructor-Guided Courses

103 Construction Blueprint Reading

201S Leadership + Motivation

105 Estimating + Bidding 1

202 Oral + Written Communication Skills

106 Estimating + Bidding 2

203P Problem Solving + Risk Management

107 Construction Materials + Processes

204 Contract Documents + Construction

108 Construction Equipment + Methods

205T Planning + Scheduling

109 Practical Applications of Civil Sitework

206T Construction Productivity + Cost Management

110 Civil Blueprint Reading + Materials

305 Building Green Buildings

114 Estimating Civil + Sitework Construction

308 Construction Project Management

Courses begin in January, April, June and September * Each Course is a 10-Week Session

Visit ...

ASPEnational.org / Education / Certificate Programs or Online Classes

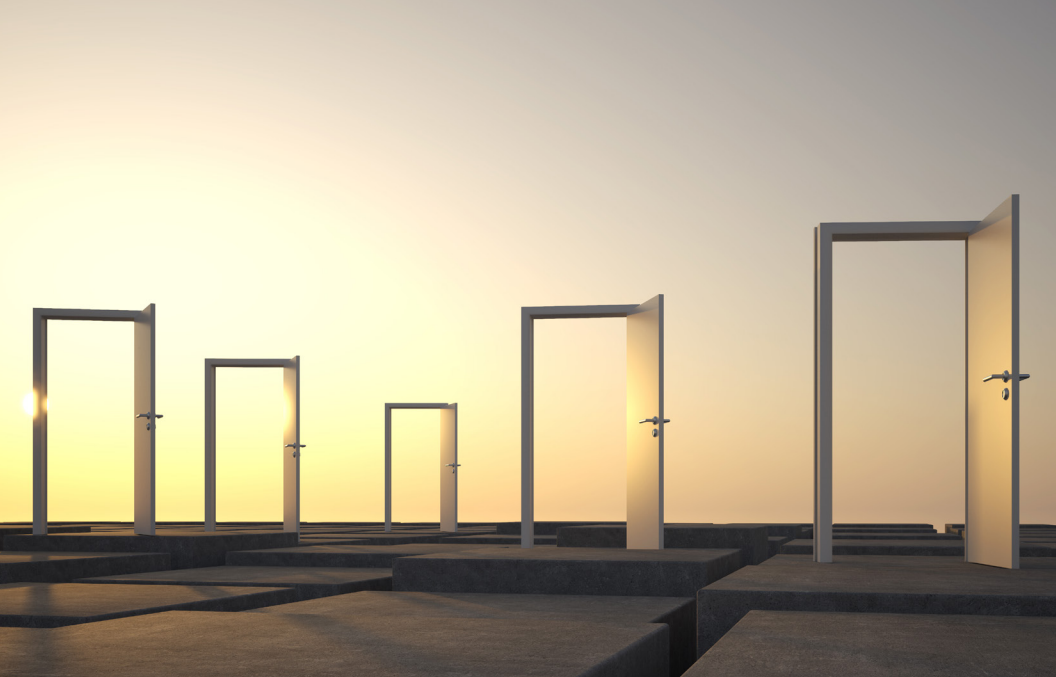
for the following Class Information

Fees • Prerequisites • Learning Objectives • Class Organization + Grading • Weekly Syllabus

Assistance is available by contacting

Cinder, Online Class Coordinator • 615.316.9200 • Cinder@ASPEnational.org

As an ASPE Member, you will enjoy discounted Class Fees !



Search for quality candidates on ASPE Career Center

ASPE will allow you to:

- Post your job in front of the most qualified group of industry professionals
- Promote your jobs directly to candidates via the exclusive Job Flash email
- Search the anonymous resume database to find qualified candidates
- Manage your posted jobs and applicant activity easily on our user-friendly site

Start your search today by visiting
[ASPEnational-jobs.careerwebsite.com](https://www.aspenational-jobs.careerwebsite.com)



**AMERICAN SOCIETY
OF PROFESSIONAL
ESTIMATORS**