



Published by San Diego Chapter #4  
American Society of Professional Estimators



# S.D. Mator



October 2015

Volume 14, Issue 3

## Drones in Construction

**DATE:** TUESDAY, OCTOBER 13, 2015

**TIME:** 5:15 PM—Registration

5:30 PM—Networking

6:00 PM—Introductory  
Announcements

6:15/6:30 PM—Dinner Service  
followed by the Program

**PROGRAM:**

**DRONE TECHNOLOGY FOR  
CONSTRUCTION**

**PRESENTERS:**

Dan Burton - CEO & Co-Founder

Eli Tamanaha - CTO & Co-Founder  
DroneBase

**DINNER MEETING VENUE:**

Riverwalk Golf Club

1150 Fashion Valley Road, San Diego

DINNER SERVICE OFFERS ATTENDEES A CHOICE  
OF STUFFED PORK CHOP OR VEGETARIAN DISH.

**COST:** \$40 per person

\$25 for full-time students

*Cancellations must be received by NOON on Monday,  
October 12<sup>th</sup> or no shows will be billed accordingly.*

[Click here for Dinner Mtg Reservation Policy](#)

**RSVP:** Paul Chang, E

Sundt Construction

619.321.4822

[aspechapter4@outlook.com](mailto:aspechapter4@outlook.com)

Meeting at a Glance



## October Program Notes:

### Drones in Construction

Over the years, ASPE National has stressed the importance of treating monthly Chapter programs as a continuation of the Society's emphasis on education. San Diego Chapter #4 has embraced that philosophy in its approach to the range of topics offered for the benefit of our membership and the local construction community. We attempt to schedule meetings that will address the interests of the group and explore new advances that can augment estimating methodologies. Whether that focus involves cutting-edge technology associated with software developments, systems to implement Best Practices for our profession, or innovations in project management techniques to help the field forces, ASPE seeks opportunities to bring those types of presentations to our audience as an integral part of our Mission. In October, we join NAWIC Chapter #21 to learn about the emerging use of drones in construction and the government restrictions that apply to the operation of Unmanned Aerial Vehicles (UAV's) or Unmanned Aerial Systems (UAS's) in the industry.

[\(cont'd on pg 3\)](#)

### INSIDE THIS ISSUE ...

|  |       |
|--|-------|
| October Program Notes .....  | 1,3-5 |
| From Our President .....   | 2,5   |
| The Times They Are A Changin' (Report on Northwest & Southwest Regional Business and Chapter Development Meeting) by Steven E. Schraibman AIA CPE CASp ..... | 6-8   |
| Meet the Members of Your Chapter Board:  |       |
| Daniel A. Luckhardt CPE .....  | 8     |
| Become an ASPE Newsletter Sponsor or Advertiser .....  | 9     |
| ASPE Membership, Mission Statement and Code of Ethics .....  | 9     |
| San Diego Chapter Calendar of Events .....   | 10    |
| 2015-2016 Officers, Board of Directors, Committees.....  | 11    |
| Corporate Sponsors & Monthly Advertisers.....  | 12    |

### ATTACHMENT:

|   |    |
|---|----|
| ASPE San Diego Chapter's A Day at the Races ..... | 13 |
|---|----|

**G**reetings!

As I am writing this month's message, I am sitting in the Seattle Airport on my way back from the Joint NWSW Regional Meeting. This was one of the better Regionals I have attended. The attendance was outstanding with representative from a lot of chapters throughout the two regions. Our Chapter was represented by myself and Steve Schraibman. Our hosts, Seattle Chapter 45, were absolutely fantastic. On Friday, we had more of an educational program in which we heard from four speakers. One of the more interesting ones was how a Subcontractor was embracing BIM in their operations and seeing a pay-off by doing so. On Saturday, we had the Regional Meeting and discussed various Chapter Issues. One of the key items discussed was how do we increase participation, attract new members, and grow our chapters stronger. If any of you reading this have ideas, I would love to hear them. For more detailed information, please read the [article](#) by Steve Schraibman in this issue.



Michael Moyers, CPE

Well, another meeting and another poor attendance. Last month we had a site tour of the new Otay Mesa Border Crossing. Our tour host and guide was Turner Construction. We had around 20 who RSVP'd but only 9 showed up. Those who showed up were led through the new facility by Turner's Viry Martino and Meredith Stumpo. What an interesting facility in that when you cross, you are right in the Tijuana Airport. After the tour, we had dinner which was catered by El Indio. While we ate, Viry gave a short presentation on the history of the project along with some construction highlights including the Bridge Construction and working in conjunction with Mexico.

At our recent Board meeting, we had a discussion on ideas for future Dinner Meeting topics. Again, I would like to reach out to our Membership to solicit ideas of what you would like to see as a meeting topic.

For those of you who have thought of becoming more involved in our Chapter, we could always use the help. If you are interested, please contact me at (858) 737-7316 or email me at [Michael.moyers@bestinteriors.net](mailto:Michael.moyers@bestinteriors.net).

### **Membership Status:**

As of the most recent Chapter Roster issued September 2015 by SBO (Society Business Office), our membership has decreased to 52 members. That equates to a loss of 13 members who did not renew this year. Currently we have 18 members who are CPE's and one FCPE. As a reminder to all members, if you have changed jobs, are in-between jobs, retired or have had to relocate, please update your status/contact information online at [www.aspenational.org](http://www.aspenational.org). Remember, to log in, your User ID is your membership number, and your default password is your email address. You can also contact your Chapter Membership Chairman for assistance at [frednagel@gmail.com](mailto:frednagel@gmail.com).

### **New Members:**

We do not have any new members to report this month.

### **Dues Renewal:**

We have now passed through the 2015-2016 year dues renewal period. At the beginning of the cycle, we had a total of 65 members and as of September 5<sup>th</sup>, we are down to 52 members. For those of you who have not renewed and are planning on it, you can still renew your valuable membership. Please contact SBO at (615) 316-9200.

As a reminder, the Dues Renewal Process is as follows:

1. Membership Invoices are now sent *via email* and you should have already received it. If not, please let me know so I can verify your email address with what is on record with SBO.
2. You can pay your dues online through the ASPE National website ([www.aspenational.org](http://www.aspenational.org)). Just click on the Membership tab and you will see the Blue Renew Button. Click there and you are on your way to renewing. Before starting the renewal process you will need your (User ID) and (Password).
3. If you need help, contact SBO at (615) 316-9200.

[\(cont'd on pg 5\)](#)



Drone assembling polystyrene brick structure



ETH Zurich investigating use of drones to build tensile structures



ETH Zurich investigating use of drones to build tensile structures

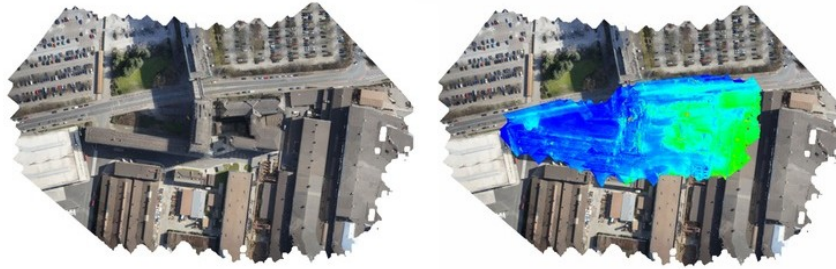


Project in Japan under observation with use of drone (Smart Construction initiative)

Even though the United States remains as the world leader in the production of UAV's, we lag behind other countries in terms of commercial applications of drones. Besides construction, those activities include movie making, showing homes for real estate firms, roof inspections, mining to analyze post-blast surveys, environmental studies, crop dusting, emergency response and recovery, and missing person searches. An engineering firm in the Midwest has worked with Kansas State University to build and fly a UAV for surveying and mapping a landfill in Manhattan, KS. Following a programmed path at 35-40 mph, the camera mounted on the craft can document the 160-acre site in 40 minutes on one battery charge, a 50% reduction in cost for that task.

Komatsu, a Japanese heavy equipment manufacturer, seems to be leading the charge on the equipment side with their recent launch of a new service called "Smart Construction" aimed at arming their young workforce with cutting-edge information and communication technologies. Through a platform called KomConnect, Komatsu will connect their machinery and workers to the cloud to improve overall efficiency, artificial intelligence control for operating that machinery with the assistance of drones. San Francisco-based drone service provider Skycatch will be supporting Komatsu by deploying their vehicles to conduct surveys and produce 3D models to introduce live, interactive maps of jobsites. Clients will be able to overlay plans onto as-built drawings, calculate volumetric measurements, and annotate work products for themselves or to share with team members. Skycatch's CEO says that "drone technology is providing a competitive edge to companies that choose to successfully adopt this new know-how. The question becomes, why not get imaginative and employ such technology to make projects better?"

[\(cont'd on pg 4\)](#)



Siemens pilot project to study energy losses with thermal maps recorded by drones

Companies may have lots of advanced software, sophisticated measuring tools, quality building materials, but what advantages could be gained without employing some type of flying machine, jet pack or helicopter? Such assessments can usher in consideration of the concepts unique to drones. It is only a matter of time for drones to become a key element in the mainstream technology on projects.

The following list illustrates several examples of ways to engage UAV's in the construction field:

- Surveying – quickly survey the jobsite and generate maps
- Show Progress to Clients
- Monitor Jobsites for Work Progress, Maintaining Safety Standards
- Inspect Structures from Building Exteriors to Highway Bridges
- Better Safety Records – eyes and ears in the sky can locate unstable elements, precarious work practices, potential hazards
- Keeping Projects on Track and on Budget – identifying those parts that are off-track and will impact time and cost

There are numerous legal complications regarding the regulation of UAV's in this country. The Federal Aviation Administration (FAA) has held this government entity has authority over the use of drones and determining individuals or firms suspected of violations of current policy. The FAA has control over U. S. National airspace; at any given time, there are over 7,000 aircraft in the skies. Adding thousands of drones to our crowded air space represents a concern about recognizing their commercial application and developing regulations pertaining to their use. Congress passed the FAA Modernization and Reform Act in 2012 which incorporates a provision known as the "Drone Act" to integrate unmanned aircraft into the National Airspace System by the latter part of 2015.

The UAS Test Site Program will help the FAA gain a better understanding of questions surrounding training requirements, operational specifications, and technology considerations. In addition, commercial use of UAV's on jobsites poses problems as to whether contractors have the necessary insurance coverage for liability arising from drone use. Most Comprehensive General Liability policies exclude liability from the insured's "ownership, maintenance, or use of an auto, aircraft, or watercraft." Will the new provisions clear up the controversy as to whether a UAV constitutes an aircraft?

NAWIC Chapter #21 has invited representatives from DroneBase to address the Joint Meeting on **Tuesday, October 13<sup>th</sup>** (2<sup>nd</sup> Tuesday of the month, not the 3<sup>rd</sup> Tuesday as usual for ASPE functions). Dan Burton, CEO and Co-Founder, along with Eli Tamanaha, CTO & Co-Founder, will cover these topics during their presentation:

- Introduction to Drone Technology
- Applications for Drones in Construction
- How to Engage with Drones
- Near-Term and Long-Term Drone Innovations and Capabilities

[\(cont'd on pg 5\)](#)

## Upcoming Events:

Please come and join us at our upcoming October meeting. We will be joining NAWIC for a joint meeting. Please note that the meeting will be held on the **second Tuesday (October 13<sup>th</sup>)** in lieu of the third Tuesday this month. Please be sure to read the [Program article](#) in this issue by Frank Young.

Other events to keep an eye out for are:

- A. At our November meeting, we will be having Dave Umstot PE with Umstot Project and Facilities Solutions. The program will be on "Lean Construction and Its Impact on Estimating and Operations Construction Firms." The meeting date will be Tuesday, November 17, 2015. Dinner venue is yet to be determined.
- B. Our annual December Breakfast meeting will be Friday, December 18, 2015, and we will again have Alan Nevin with the Xpera Group.

### Michael D. Moyers, CPE

Best Interiors, Inc.

ASPE San Diego Chapter #4 President

## October Program Notes

[cont'd from pg 4](#)

As a Drone Service Provider, DroneBase can be best described as a business-to-business oriented marketplace which offers its services to monitor or survey construction jobsites. Dan Burton is a former Marine Infantry Officer who observed the value of drones during his service to our country in Iraq and Afghanistan. Registration will begin at 5:15 PM and networking continues until the start of the program agenda at 6:15/6:30 PM.

Dinner service offers attendees a choice of stuffed pork chop or vegetarian dish, and the speaker(s) will be introduced at the conclusion of the meal. The cost for this event will be \$40.00 per person and \$25.00 per student. This program should be both interesting and educational to those who join the ASPE and NAWIC members and guests.

Contact Paul Chang with Sundt Construction to make your reservation today:


Telephone – (619) 321-4800    Email – [aspechapter4@outlook.com](mailto:aspechapter4@outlook.com)

**NOTE: ASPE'S COUNT MUST BE TURNED INTO NAWIC BY NOON ON THURSDAY, OCTOBER 8<sup>th</sup>.**

### Frank E. Young, FCPE

ASPE San Diego Chapter #4

Programs Committee Chair



**TRINITY GRADING, INC.**  
Lic.# 847643


**Tim Lackey**  
President

P.O. Box 1122  
Fallbrook, CA 92088

Phone: (760) 728-2981  
Fax: (760) 728-5781  
Cell: (619) 520-5576

[tlackey@trinitygrading.com](mailto:tlackey@trinitygrading.com)  
[www.trinitygrading.com](http://www.trinitygrading.com)

**Todd Caha, CPE**  
Senior Estimating Manager



**Baker Electric, inc.**

4 Generations since 1938

1298 Pacific Oaks Place • Escondido, CA • 92029  
858.566.1980 • 760.745.2001 • Fax 760.745.0292  
Direct 760.690.5142  
[tcaha@baker-electric.com](mailto:tcaha@baker-electric.com)

# The Times They Are A Changin'

## Report on Northwest & Southwest Regional Business and Chapter Development Meeting

by **Steven E. Schraibman, AIA, CPE, CASp**  
**ASPE Chapter #4 Public Relations Chair**



Steve Schraibman CPE

To paraphrase an old Bob Dylan song, the times are certainly changing, and if we as an organization are going to thrive, we need to adapt. If you will note, I did not mention the word *survive*, because in my view thriving is what we need to do and can do.

I have been involved in a variety of capacities with ASPE since the mid-1990s, and I view this as really the most exciting time to be a Board member in guiding this Chapter and indeed even the organization into the future. Gone are the old ways of doing things, whether it is attracting new members or developing great programs.

The idea of 'out with the old and in with the new' is not the way to move forward. All social structures need to evolve, and a professional organization needs to do so as well. The ASPE started for a reason and responded to a need from the construction environment. There is still a need for estimators, perhaps even more so now that we have such an array of sophisticated software and applications to analyze the cost of construction. What we have to do is adapt and, with what I saw over the last three days, adapt we will.

I remember when I was at university studying architecture, the concept of computer-aided design started to become a reality. The media and pundits all foresaw the end of the profession of architecture – not a nourishing thought when one is halfway through a six-year degree in architecture. "Archigeddon" (the architectural version of Armageddon) was said to be no more than 5-10 years away. Well, as you are probably aware, there is still a profession called architecture, and while it is still subject to the vagaries of fiscal doom and boom, it is not going away.

All types of traditional organizations are struggling to come to terms with their relevance in this 'brave new world' – whether it is recreational clubs or professional organizations steeped in history and tradition.

Well, this was what I took from the Regional meeting held recently in Seattle over the first three days in October.

The local Chapter 45 (Puget Sound) put on what can only be described as a riveting, thought-provoking and relevant event, from the constant supply of food and beverages to the comfortable venue and the exciting presentations. I had expected that there might be a dozen people there at the most. Well, the room was packed to capacity, with more than 40 persons from a variety of the Northwest and Southwest Regions in attendance. We were fortunate to have Patsy Smith, our Chief Executive from National, in attendance.

In addition, the key takeaway from it all is the word RELEVANT because if we are to survive, then that is what we need to do – be relevant to the next generation of estimators. This came across very strongly in the last day's session, which was dedicated to chapter development and growth.

T.J. Schwertfeger, our Southwest Regional Governor (actually, she ran this session more like an English "Governess"), spoke about the challenges facing ASPE and opened it up to the audience. T.J. had all the salient points listed for discussion.

Open for discussion among those present were the 'trifecta,' as she referred to them – good programs, good membership and growth. The discussion was lively and covered other topics as well, from how to attract the Millennials to managing member data to social media.

Chapter 45 even managed to raise over \$540, with some serious strong-arm tactics, for the national scholarship fund and gave away some tantalizing door prizes. Apparently, they have an inside scoop on new coffee brands by a certain local company known as Starbucks®.

[\(cont'd on pg 7\)](#)

|  |  |
|--|--|
|  <p><b>US<br/>CONCRETE<br/>PRECAST GROUP</b><br/><i>Build with US™</i></p> | <p><b>Todd Ebbert</b><br/>General Manager<br/>Southern California<br/>tebbert@us-concrete.com</p>  |
|  | <p>2735 Cactus Road<br/>San Diego, CA 92154<br/>Direct: (619) 240-8002<br/>Tel: (619) 240-8000<br/>Cell: (619) 843-3849<br/>Fax: (619) 661-1038<br/>www.sdpc.com</p> |
| <p>PROVIDING INNOVATIVE SOLUTIONS, QUALITY, AND SERVICE</p>  |  |

Day one provided a feast of educational opportunities and started with a Building Information Modeling (BIM) presentation – but this time around, with a difference. Mike Herzog and David de Yarza of BNBuilders gave us an insight into an aspect of BIM that is not often discussed, *i.e.*, how inconsistencies and conflicts in the drawings can lead to significant issues for the construction team onsite, if they are not picked up and resolved early.

David is the Director of Innovation and Mike is the Chief Estimator, and together they have a wealth of information on the application of BIM and how it relates to cost estimating. Once again, the role of the experienced estimator is integral to the successful costing of the project. For example, David mentioned that if there is a soffit above a dropped ceiling, it is sometimes not identified on the BIM framing and drywall. Estimators unaware of this are going to likely leave a sizeable chunk of money on the table or more specifically in this instance on the ceiling.

The usual issues such as multiple service penetrations in close proximity, through beams and MEP chase locations, can create havoc if not resolved. So no matter how beautiful a 3-D view of a building can appear, it's when one looks more closely that one can see the blemishes. However, it takes a really experienced eye to pick up these conflicts and then once done, these errata are passed on to the design team for resolution, or most likely corrected by David or one of his team after consulting with the design team.

It appears from Mike's presentation that the estimating software applications that are aligned to BIM are really not yet entirely accurate or as viable as one would like to believe, which once again translates to the input of an experienced estimator being intrinsic to producing a successful cost estimate.

The second presentation of the morning also related to BIM, but this was a terrific demonstration of the cost savings benefit of BIM, if utilized properly. In fact, the demonstration was made even more vital and viable due to its application.

Adrian Siverson (Project Manager/Estimator) put on this presentation with some input by the owner of R&D Masonry – Don Kenney. The title of Adrian's presentation was "BIM Technology as a Basis for a Bid." This case study referred to an eventual successful bid on a 1.7-mile masonry sound wall for the Washington State Department of Transportation. With the use of masonry as a construction material, R&D was able to resolve a number of potential issues that usually crop up with cast-in-place sound walls in close proximity to freeways—one of these being the lack of cranes, which might topple onto the freeway. R&D was able to limit its use of machinery to forklifts to move materials around.

Using the BIM with a sharp-eyed analysis, they were able to identify conflicts with the placement and sizing of the rebar and were able to suggest alternatives that would be easier to actually construct. They were also able to show the client, who had an inherent resistance to masonry sound walls, what the wall would look like with the introduction of patterned blocks of differing size and texture.

They were also able to save on wastage with regard to blocks and reinforcing and had something like 1,600 blocks left over for a wall that was 1.7 miles long.

At the outset, this might seem an unusual application of BIM, but in fact, R&D Masonry showed how invaluable a tool it can be, if its limitations are understood and it is applied correctly.

After a delicious lunch break, T.J. did a presentation aimed specifically at the non-certified among the audience, in which she described the professional certification process and included the preparation and publishing of a technical paper in support of the CPE certification and designation.

Next up was a presentation on "Emerging Technologies," by a locally renowned academic, Carrie Dossick, Ph.D., P.E. Dr. Dossick is a research professor at the University of Washington, with a focus on collaborative methods and technologies, such as Integrated Project Delivery (IPD) and, of course, Building Information Modeling (BIM). Dr. Dossick described a process known as 'messy talk,' which utilizes a collaborative team effort and combines a hand-on critique of a BIM model, to resolve design conflicts and foster a collaborative design process.

Of course, no professional development event would be complete without bring in a lawyer to subdue the otherwise rambunctious group. John P. Ahlers of Ahlers & Cressman, PLLC is an experienced litigator specializing in the resolution of construction disputes. Washington and California differ in some respects as it relates to legal issues, but there were enough similarities to be of use to anyone in the audience.

John started rather simply with a definition of what constitutes a contract, but it very quickly got more complex when applied to the field of construction, and especially the legal implications of bids for contractors and sub-contractors. However, John's affable style made a very complex area appear far more accessible – well, that's at least how it seemed to the audience, though I'm not sure how much we all took in.

[\(cont'd on pg 8\)](#)

## Meet the Members of Your Chapter Board ... Focus on DANIEL A. LUCKHARDT, CPE *MEP Coordinator — BNBuilders, Inc.*



*Daniel Luckhardt CPE*

**D**aniel Luckhardt has 29 years of experience within the construction cost estimating and construction management roles. Daniel's experience primarily includes working in the field of Pre-construction Cost Estimating. As an experienced 'Senior Cost Estimator,' specializing in the mechanical, electrical, and plumbing (MEP) disciplines', Daniel understands managing project cost from conception through completion.

Daniel received his Bachelor of Science and his Master of Arts degrees in Industrial Education from Eastern Michigan University. His project experience includes commercial, industrial, manufacturing, biotech/pharmaceutical and CGMP facilities, healthcare, correctional facilities, higher/K-12 education, waste water treatment, domestic water transportation, heavy civil and mid-rise residential.

Daniel Luckhardt is employed by BNBuilders, as a Senior MEP Estimator. BNBuilders specializes in highly technical projects for a wide range of clients including research, education, technology, healthcare, and public organizations. BNBuilders uses an integrated approach to delivering their projects that relies heavily on innovation, coordination and communication.

BNBuilders was established in the year 2000 by two construction veterans, Brad Bastian and Jeff Nielsen. With a dedicated client-focused culture, BNBuilders has experienced measured growth and is one of the fastest growing construction firms along the West Coast. To learn more about the company, please visit [www.bnbuilders.com](http://www.bnbuilders.com) or look for BNBuilders on [Facebook](#), [Twitter](#), and [LinkedIn](#).

Daniel has been an active member of the American Society of Professional Estimators (ASPE) since 1990 and he is a 'Certified Professional Estimator' (CPE). He is also a two time recipient of the 'Albert L. Vallin Estimator of the Year Award' for the American Society of Profession Estimator's local Chapter Number Four. He is currently serving on the ASPE Board of Directors as 'Second Vice President.' In addition, Daniel has been an active member of the Association for the Advancement of Cost Engineering International (ACEI) since 2004.

Daniel is also an Adjunct Professor at the New School of Architecture + Design ([www.newschoollarch.edu](http://www.newschoollarch.edu)) teaching the CM 202 course within the Construction Management Program. In addition, he has enjoyed teaching at National University ([www.nu.edu](http://www.nu.edu)) for the School of Engineering and Technology. The courses he has taught include Mechanical and Electrical Systems for Commercial Buildings' and 'Scheduling, Estimating, and Project Controls I and II,' and 'Plans and Specifications.'

Daniel can be contacted at 619.633.8925 or [dan.luckhardt@bnbuilders.com](mailto:dan.luckhardt@bnbuilders.com). ■

## The Times They Are A Changin'

*[cont'd from pg 7](#)*

The day concluded with a delicious BBQ consisting of ribs, chicken, pulled pork and all the usual complement of trimmings. Anyone who left hungry had only themselves to blame.

Given the events of the last couple of days, a lot of information and numerous social activities were compressed into a short timeframe. With busy schedules, it would be hard to justify a prolonged event, but it would have been nice to get to see a little more of the wonderful city of Seattle and its surrounds. Well, maybe next time.

Thanks again to Chapter 45, T.J. Tom Cole, Don and the rest of the team for an incredible learning experience. You have raised the bar for regional meetings with your hospitality and set a wonderful example.

**Steven E. Schraibman, AIA, CPE, CASp**

Arcor Inc. Consulting

*ASPE San Diego Chapter #4*

*Public Relations Chair*





### **\$350 CORPORATE SPONSORSHIP, includes:**

- Sponsor Recognition in each of the 12 Monthly Newsletters
- Includes a Hot Link to Either Your Website or Email
- A Full-Page Sponsor Profile in 1 Issue

### **MONTHLY ADVERTISEMENT:**

12 Mo. Issues – 1/4-Page Ad for **\$450**  
OR

12 Mo. Issues – Business Card for **\$200**

### **EMPLOYMENT AD:**

**\$50** per month (FREE to ASPE Members)

### **FOR MORE INFORMATION:**

Contact **LAURA PARKER, CPE**  
619.704.2914 (ofc); 619.977.2817 (cell)  
OR [lauraparkercpe@gmail.com](mailto:lauraparkercpe@gmail.com)



## **ASPE MISSION STATEMENT**

The American Society of Professional Estimators serves construction estimators by providing education, fellowship and the opportunity for professional development.

[Click here for ASPE's CODE OF ETHICS.](#)

## **ASPE Membership**

An accurate cost estimate is the first of many key components of a successful construction project. Plan interpretation, labor and material costs, scheduling costs, and level of difficulty recognition are a fraction of the skills necessary to become a successful estimator.

Why join the American Society of Professional Estimators? ASPE is the most recognized and credentialed group of construction cost professionals in our nation's construction industry. ASPE provides education, industry information, and fellowship to all levels of our members. It is made up of professionals of several different classifications.

- A- **Estimator**—shall have at least five years' experience as an estimator in one or more of the construction estimating disciplines.
- B- **Constructor**—shall be an active construction professional experienced in one or more of the construction disciplines with at least 5 years' experience.
- C- **Associate Member**—is a Member with less than 5 years of experience as an estimator or an active construction professional. When the Member achieves 5 years of experience, the Member shall be given one of the Member classifications listed above.

One of the ultimate goals of a member in ASPE is to achieve status as a "Certified Professional Estimator," otherwise know as "CPE." CPE status is recognized by Builders, Government Agencies, Developers, and many other Corporate entities as the highest level of qualification as an estimator. Educational training is available to become part of this elite group of professionals.

ASPE San Diego Chapter 4 is perennially recognized as one of the top chapters of the nation's 50 chapters. The local chapter meets on the third Tuesday of each month. This general membership meeting offers education and insight into our industry. Each membership meeting is highlighted by presentations and guest speakers, with information pertinent to our ever-changing industry.

If you would like to become part of this exciting group of professionals, please contact Michael Moyers CPE at:

[michael.moyers@bestinteriors.net](mailto:michael.moyers@bestinteriors.net) 858.737.7316

# ASPE San Diego Chapter #4

## CALENDAR OF EVENTS

- ◆ **Thursday, October 1, 2015 — 5:00-8:30 PM**  
**Friday, October 2, 2015 — 8:00 AM to 8:00 PM**  
**Saturday, October 3, 2015 — 8:00 AM to 1:15 PM**  
**ASPE Joint Northwest/Southwest Regional Meeting**  
**Location:** Clarion Hotel near SeaTac Airport  
 Renton, WA
- ◆ **Tuesday, October 13, 2015 — 5:30 PM Registration**  
**Joint NAWIC/ASPE San Diego Dinner Meeting**  
**Program:** Drone Technology for Construction  
**Speakers:** Dan Burton, CEO & Co-Founder  
 Eli Tamanaha, CTO & Co-Founder  
 DroneBase  
**Location:** Riverwalk Golf Club  
 1150 Fashion Valley Road, San Diego  
**RSVP DUE BY NOON ON THURS., OCTOBER 8<sup>th</sup>**
- ◆ **Tuesday, October 27, 2015 — 5:30-7:30 PM**  
**ASPE San Diego Board of Directors' Meeting**  
**Location:** Cumming Corporation  
 15015 Avenue of Science, Suite 160  
 San Diego, CA 92128
- ◆ **Saturday, November 7, 2015 — 11:00 AM - 5:00 PM**  
**ASPE San Diego Day at the Races**  
**Location:** Clubhouse Terrace Restaurant  
 Del Mar Thoroughbred Club
- ◆ **Tuesday, November 17, 2015 — 5:00 PM Registration**  
**ASPE San Diego Monthly Dinner Meeting**  
**Program:** Target Value Design and Integrated  
 Project Delivery: What Do These  
 Innovations Mean for Estimators?  
**Speaker:** Dave Umstot, P.E.  
 Umstot Project and Facilities Solutions  
**In-house Speaker:** John Balistreri  
 Update on Certification Program  
**Location:** Riverwalk Golf Club  
 1150 Fashion Valley Road, San Diego
- ◆ **Tuesday, December 1, 2015 — 5:30-7:30 PM**  
**ASPE San Diego Board of Directors' Meeting**  
**Location:** Cumming Corporation  
 15015 Avenue of Science, Suite 160  
 San Diego, CA 92128
- ◆ **Friday, December 18, 2015 — 7:00 AM Registration**  
**Joint ASPE/CSI San Diego Christmas Breakfast Meeting**  
**Breakfast BEGINS PROMPTLY AT 7:30 AM**  
**Service:**  
**Program:** 2016 Economic Forecast  
**Speaker:** Alan Nevin  
 Director of Economic & Market Research  
 Xpera Group  
**Location:** Admiral Baker Golf Course Clubhouse  
 2400 Admiral Baker Road, San Diego



# GET INVOLVED IN YOUR LOCAL CHAPTER !!!



## TECHNICAL COMMITTEES:

### Certification:

John Balistreri, CPE

### Education:

Frank Young, FCPE

John Heusner, CPE

### Standards:

Fred Nagel, CPE

## STANDING COMMITTEES:

### Chapter Awards

### National Awards

### Nominations:

Frank Young, FCPE

### Bylaws:

Michael Moyers, CPE

### Parliamentarian:

*PENDING*

### Communications—

### Newsletter & Website:

John Balistreri, CPE

### Finance:

Michael Moyers, CPE

### Ways & Means:

David Luhm, E

### Historical:

*PENDING*

### Public Relations:

Steve Schraibman, CPE

### Membership:

Fred Nagel, CPE

### Programs/Calendar:

Frank Young, FCPE

## OTHER COMMITTEES:

### Ethics:

*PENDING*

### Mentoring:

Frank Young, FCPE

### Scholarships:

Dan Luckhardt, CPE

### Telephone:

Paul Chang, E

## 2015-2016 Chapter Officers

| Office                               | Officer                                     | Phone  | Fax          | Email  |
|--------------------------------------|---|--|--------------|--|
| <b>President</b>                     | Michael Moyers, CPE<br>Best Interiors, Inc. | 858.737.7316<br>619.843.6962-C                 | 858.737.7317 | <a href="mailto:michael.moyers@bestinteriors.net">michael.moyers@bestinteriors.net</a>                                       |
| <b>1<sup>st</sup> Vice-President</b> | John Balistreri, CPE<br>Kaiser Permanente   | 619.589.3080<br>619.861.1131-C                 | 619.589.3192 | <a href="mailto:john.t.balistreri@kp.org">john.t.balistreri@kp.org</a>   |
| <b>2<sup>nd</sup> Vice-President</b> | Dan Luckhardt, CPE<br>BNBuilders, Inc.      | 858.366.0931<br>619.633.8925-C                 |              | <a href="mailto:daniel.luckhardt@bnbuiders.com">daniel.luckhardt@bnbuiders.com</a>   |
| <b>3<sup>rd</sup> Vice-President</b> | VACANT                                      |  |              |  |
| <b>Secretary</b>                     | James Yu, E<br>Cumming Corp. USA            | 858.217.3574<br>858.273.9491-C                 | 858.673.9263 | <a href="mailto:ju@ccorpusa.com">ju@ccorpusa.com</a>   |
| <b>Treasurer</b>                     | Laura Parker, CPE                           | 619.977.2817-C                                 |              | <a href="mailto:lauraparker@ccpe.com">lauraparker@ccpe.com</a>   |
| <b>Immediate Past President</b>      | Frank E. Young, FCPE<br>CSOS Consulting     | 619.440.5517<br>619.980.4025-C                 | 619.401.7545 | <a href="mailto:pancho77@cox.net">pancho77@cox.net</a>   |
| <b>Executive Administrator</b>       | Margy Ashby                                 | 619.749.1890<br>619.593.9988<br>619.302.3257-C | 619.839.3817 | <a href="mailto:info@aspechapter4.org">info@aspechapter4.org</a><br><a href="mailto:asped4@gasvcs.net">asped4@gasvcs.net</a> |
| <b>Webmaster</b>                     | Sharon Jones                                | 619.749.0597                                   | 619.749.7097 | <a href="mailto:acsolution@cox.net">acsolution@cox.net</a>   |

## 2015-2016 Chapter Board of Directors

| Director   | Phone                               | Fax          | Email  |
|--|-------------------------------------|--------------|--|
| John W. Heusner, CPE<br>CRB Builders               | 760.444.3319                        | 760.496.3711 | <a href="mailto:johnwheusner@san.rr.com">johnwheusner@san.rr.com</a>     |
| David Luhm, E<br>Alpha Mechanical                  | 858.279.1300 x519<br>760.238.3355-C | 858.278.3510 | <a href="mailto:dluhm@alphamechanical.com">dluhm@alphamechanical.com</a> |
| Fred Nagel, CPE<br>Nagel Construction Consultants  | 619.647.1304-C                      |              | <a href="mailto:frednagel@gmail.com">frednagel@gmail.com</a>             |
| Steve Schraibman, CPE<br>Arcor-Inc.                | 858.481.4494<br>619.252-4941-C      | 858.481.4146 | <a href="mailto:steve@arcor-inc.com">steve@arcor-inc.com</a>             |
| Paul Chang, E<br>Sundt Construction<br>(Alternate) | 619.321.4822<br>619.430.3361-C      | 619.321.4932 | <a href="mailto:pmchang@sundt.com">pmchang@sundt.com</a>                 |



American Society of Professional Estimators  
**San Diego Chapter 4**  
 CALIFORNIA  
 Visit our Chapter website at <http://www.aspechapter4.org>



Published by San Diego Chapter 4  
 American Society of Professional Estimators

# S.D. Mator



## Register Today!

For the Tuesday, October **13**, 2015  
 ASPE & NAWIC San Diego Chapters  
 Joint Dinner Meeting ...

### Drones in Construction

#### CONTACT US

ASPE San Diego Chapter  
 127 N. Westwind Drive  
 El Cajon, CA 92020-2955

Phone: 619.749.1890

Email: [info@aspechapter4.org](mailto:info@aspechapter4.org)

Web: <http://www.aspechapter4.org>

THE ASPE SAN DIEGO CHAPTER GRATEFULLY  
 ACKNOWLEDGES THE GENEROUS SUPPORT OF OUR

#### CORPORATE SPONSORS

**Baker Electric Solar**

<http://bakerelectricsolar.com>

**Balfour Beatty US**

<http://www.balfourbeattyus.com>

**California Comfort  
 Systems USA, Inc.**

<http://www.comfortsystemsusa.com>

**CP&M (Construction  
 Planning & Monitoring)**

<http://www.edmondsconsultants.com>

**Johnson, Finch & McClure  
 Construction, Inc.**

<http://jfmcon.com>

**Reno Contracting Inc.**

<http://renocon.com>

**Trinity Grading, Inc.**

<http://www.trinitygrading.com>

**Waller + Opsal  
 Consulting**

<http://www.walleropsal.com>

and

#### MONTHLY ADVERTISERS

BAKER ELECTRIC, INC. .... [p. 5](#)

TRINITY GRADING, INC. .... [p. 5](#)

U.S. CONCRETE PRECAST GROUP ..... [p. 6](#)



# ASPE DAY AT THE RACES



## Saturday, NOVEMBER 7, 2015



Historically the most popular event on San Diego Chapter #4's calendar, this year's Day at the Races will be held on **Saturday, November 7th** in the shade at the Clubhouse Terrace Restaurant of the Thoroughbred Club at the Del Mar Racetrack. First Post Time is at 12:30 PM and Gates open at 11:30 AM. **Enter the RED Gate.**

We have only 36 seats this year, so reserve yours early as we expect them to be taken up fast! **Tickets are \$25/seat or \$80/table of 4.** Groups of more than 1 table must maintain foursomes, and not twosomes; there will be no discounts for multiple table orders. Single attendees will be seated where directed by ASPE member-in-charge.

Please make your reservation by sending an email to David Luhm at [dluhm@alphamechanical.com](mailto:dluhm@alphamechanical.com). Then follow up by mailing your check for the **FULL AMOUNT OF YOUR RESERVATION**—made payable to "ASPE San Diego Chapter #4"—and a copy of the Reservation Form below to:

ASPE San Diego Chapter #4  
c/o Michael Moyers  
2223 Monaghan Ct  
Spring Valley, CA 91977

# of Track Tickets requested: \_\_\_\_\_ Amount Enclosed: \$ \_\_\_\_\_

Name: \_\_\_\_\_

Phone: \_\_\_\_\_ Email: \_\_\_\_\_

For questions, please contact David Luhm:  
[dluhm@alphamechanical.com](mailto:dluhm@alphamechanical.com) or (858) 518-4698