



# S.D. Mator

Published by ASPE San Diego Chapter #4

March 2019

Volume 17, Issue 7

## MEETING AT A GLANCE

**DATE:** TUESDAY, MARCH 19, 2019

**TIME:** 5:15 PM—Registration &  
Social Networking

6:00 PM—Announcements

6:15 PM—Dinner Service

7:00 PM—Program

**PROGRAM:**

**BUILDING STRONG: SIMPSON STRONG-TIE**



**SPEAKER:**

**Ryan Swenson**  
Territory Manager  
Simpson Strong-Tie



**DINNER LOCATION:**

**Hunter Steakhouse**

2445 Hotel Circle Place N., San Diego, CA 92108

*(Mission Valley on north side of I-8 between  
Hotel Circle North and Friars Road)*

Meal Choices: Prime Rib, Chicken, Salmon or Pasta

**COST: Members & Guests – \$40/person**  
**Students (discount) – \$30/person**

*Cancellations must be received by NOON on  
Monday, March 18<sup>th</sup> or no shows will be billed.*

**RSVP:**  <http://evite.me/QCYDrE5FTJ>

MEMBERS AND GUESTS UTILIZING THE  
EVITE RESERVATION PLATFORM

MUST PROVIDE THE INDIVIDUAL'S NAME AND  
COMPANY NAME FOR EVERY REGISTRANT.

—OR: Paul Chang CPE - 619.513.4399 (cell)  
[aspechapter4@outlook.com](mailto:aspechapter4@outlook.com)

## Strengthening Structures, Empowering Engineers, and Aiding Contractors: Simpson Strong-Tie's Solutions to the Industry's Problems

by Lisa Thibodeaux, Construction Experts, Inc.  
ASPE San Diego Chapter #4 Programs Chair

In the midst of 155 mph winds, Category 4 Hurricane Michael delivered a horrible blow. It decimated cities, streets, and infrastructure. The Sand Palace, however, a three-story structure on Mexico Beach in Florida, remained untouched. How could this be?

Thoughtful and tested structural engineering and defensively designing a building to stand up to the known conditions saved this home. The owners had the home built "above and beyond code." The building had poured

[\(cont'd on pg 3\)](#)

## INSIDE THIS ISSUE ...

March Program Article .....	1,3-5
Message from the Chapter President, Paul Chang, CPE .....	2
Camp NAWIC Opportunities for High School Girls .....	2
Ask a CPE ... Q&A with John Balistreri CPE .....	5
Recap Article about the February 2019 Joint ASPE/NAWIC Dinner Meeting: "The Children's Zoo Project" .....	6
Spotlight on Member-Firms: KITCHELL .....	7
Spring Semester 2019 Online Construction Classes .....	8-9
Become an ASPE Newsletter Sponsor or Advertiser .....	10
ASPE Membership .....	10
ASPE Mission Statement & Code of Ethics .....	10
San Diego Chapter Calendar of Events.....	11
2019 Officers, Board of Directors, Committees .....	12
Contact ASPE .....	12

## ATTACHMENTS:

Reminder for all CPE Members about the New Renewal Process: Certification and Professional Development Units (PDUs) .....	13-15
Camp NAWIC 2019 flyer – June 17-21, 8AM to 4PM.....	16

## Message from the Chapter President by Paul M. Chang, CPE



Paul M. Chang CPE

Dear Friends and Members,

I would like to take this opportunity to thank everyone who came out to support our last ASPE dinner meeting, "San Diego Children's Zoo Renovation," with San Diego Zoo Architect Steve Fobes. The entire evening was truly enjoyable. ASPE appreciated the time, effort and skills of the guest speaker. The audience turnout was great and excited.

In today's construction market, Lean Construction (LC) is a method of production aimed at reducing costs, materials, time and effort. Essentially, the methodology is to minimize the bad and maximize the good. Using the principles of lean-construction, the desired outcome would be to maximize the value and output of a project while minimizing wasteful aspects and time delay. This outcome is produced when standard construction approaches are merged with a clear and concise understanding of project materials and information and two sets of management archetypes, planning and control. This may seem complex to understand, but the essence of this system is to use what is necessary without extra. This can only be done by strategic planning and action by a management group and with the help and aid of all workers. Are you using the lean philosophy? Value over waste is the key for success.

My Chapter Board of Directors and I look forward to welcoming you all at ASPE, an organization where you will not only polish your professional skills but also become a better Estimator.

A handwritten signature in blue ink that reads "Paul M. Chang, CPE".

Paul M. Chang, CPE

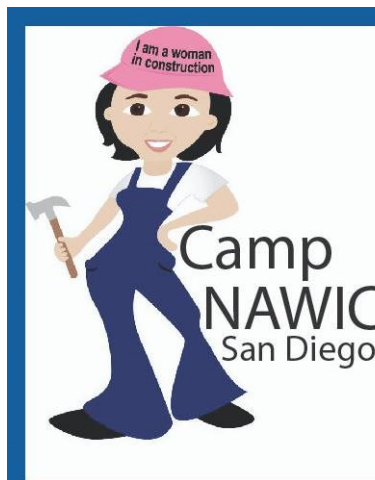
## Camp NAWIC Opportunities for High School Girls by Frank Young FCPE

**A** SPE San Diego Chapter #4 provides financial support for NAWIC's Camp NAWIC each year. This summer camp for high school girls, with an interest in design or construction, offers instruction in the basic trades for first-year campers (apprentices), and second-year or advanced campers (journeymen) undertake some type of building project (greenhouses, storage sheds, patio trellises, benches, doghouses, etc.) under the supervision of experienced professionals and college students acting as Project Managers.

**The camp runs from Monday, June 17th through Friday, June 21st at the AGC Training Center in San Diego.**

The best part of the program is the cost to the campers – **entirely free of charge** due to industry sponsors and other fundraising efforts.

High school girls can make application to attend by going to the NAWIC Future Construction Leaders website (SEE [ATTACHED](#) "SAVE THE DATE" FLYER). Previously, we have had a few children of ASPE members sign up for this tremendous opportunity to explore your child's interest in design or construction.



### Camp NAWIC 2019

June 17 - 21, 8am-4pm  
San Diego, CA 92121

Camp NAWIC is open to girls entering 9th grade and up interested in learning more about a career in construction.



# Strengthening Structures, Empowering Engineers, and Aiding Contractors: Simpson Strong-Tie's Solutions to the Industry's Problems

[cont'd from pg 1](#)

concrete walls, fiber cement siding, truss connector plates designed by Simpson Strong-Tie and an aluminum roof attached with Simpson Strong-Tie fasteners.

Truss connector plates held the structure up against the force majeure. These joints can hold up against a load three times greater than the house itself. The aluminum roof was secured to the home with Simpson Strong-Tie fasteners. Fasteners and connector plates are a drop in the bucket of the catalog of structural support items for which Simpson Strong-Tie is known.

## City Required Seismic Retrofitting

Los Angeles and San Francisco have experienced great loss due to earthquakes and have issued similar ordinances to ensure the longevity and stability of their cities and residents.

In 2013 San Francisco issued the Mandatory Soft Story Retrofit Program, a city-wide ordinance that all wood-frame buildings built prior to 1978 of three or more stories or two stories over a basement/underfloor area with any portion extending above grade, and containing five or more residential dwelling units where the building has not yet been seismically strengthened must be retrofit to meet current earthquake standards. More than 5,000 San Franciscan buildings are required to undergo retrofitting impacting over 115,000 residents.

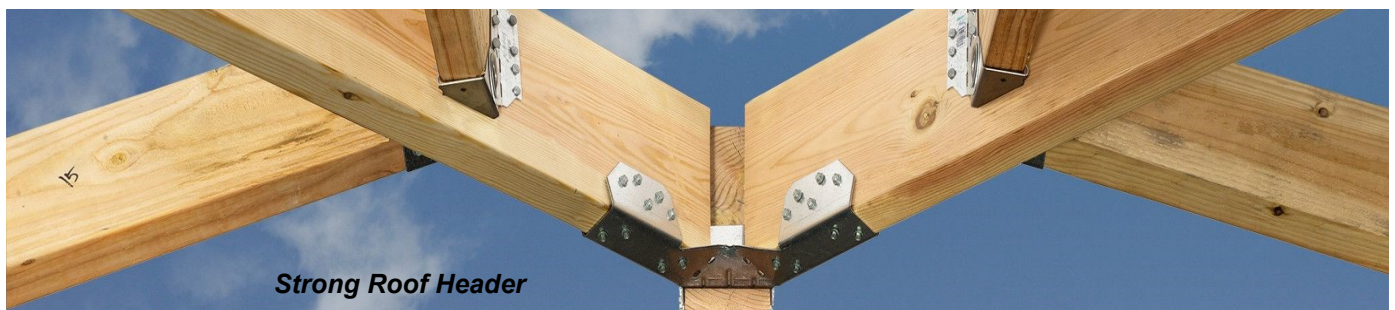
Los Angeles issued a similar ordinance three years later. 15,000 building owners were dealt the hand of finding an engineering company to help them analyze their wood frame, open-front apartment building, and non-ductile concrete buildings to show compliance with current earthquake readiness standards. California's message is clear: retrofit and show the city how you will meet the building codes or demolish the building. Two types of lateral solutions to meet the standards that come to mind are shear walls which would impact the amount of usable space or steel frames. However, installing steel frames and a classic moment frame creates a need for welding and with that a hazard: fire.

## Structural Solutions



**Continuous Load Path**

Simpson Strong-Tie created The Strong Frame Special Moment Frame. The ideal solution eliminated the risk of welding while strengthening the building so that in the next earthquake the building would move with the frame and prevent the instability of massive force on a weakened structure. The Strong Frame Special Moment Frame is structured around a "replaceable fused technology" in which the elements that take the impact of the force can be replaced. The bottom of the frame is connected to the foundation. The top of the frame is connected to the floor above keeping the soft structure locked into the foundation so it can move with the earth as opposed to snapping from the impact of the quake.



**Strong Roof Header**

[\(cont'd on pg 4\)](#)

# Strengthening Structures, Empowering Engineers, and Aiding Contractors: Simpson Strong-Tie's Solutions to the Industry's Problems

[cont'd from pg 3](#)



## Building Failures

The five main causes of building failure are:

- Design
- Detailing
- Construction
- Maintenance
- Material-related problems triggering external events/causes

These same elements are some of the strengths of Simpson Strong-Tie:

- **Design** of their products. The safety and industry standards that govern product use are not the only standards used. Simpson Strong-Tie sets their own high standards which they use to test products in their laboratories.
- **Detailing:** The engineers, sales people and all Simpson Strong-Tie employees are knowledgeable and dedicated to ensuring their clients (engineers, contractors, and owners) understand the what, how, and why of the products and their uses.
- **Construction and maintenance** are covered in their product resource guides which can be found on their website. In each guide readers will find a page explaining that the correct installation of the product will determine the effectiveness of its intended use.
- Simpson Strong-Tie helps to fix **material-related problems** through their wood connectors, fastening systems, lateral and anchoring systems, and the repair, protection and strengthening systems.
- As evidenced by the examples above, Simpson Strong-Tie specializes in securing buildings against **external events**.

## ASPE Meeting information

Join ASPE at Hunter Steakhouse March 19 at 5 to learn more about Simpson Strong-Tie's solutions for the demanding construction industry.

### Guest speaker—Ryan Swenson Regional Manager

Ryan joined Simpson Strong-Tie in 2006 as a Retail Specialist tasked mainly with setting up new retail locations and assisting the National Accounts Manager at our Stockton location. He transitioned into the Dealer Sales position covering lumber yards in the East Bay following Highway 101 North to Oregon. In 2011, Swenson took over the role of Territory Manager of the Northern Nevada and Lake Tahoe area.

Ryan is very active in the building community and is an active member of the Builder Association of Northern Nevada (BANN), The Nevada Builders Alliance (NBA), the Nevada Chapter of the Association of General Contractors (AGC), as well as the Contractors Association of Truckee and Tahoe (CATT). Ryan enjoys every aspect of his job, especially working with Engineers, Building Department and getting out to the jobsites.

[\(cont'd on pg 5\)](#)

# Strengthening Structures, Empowering Engineers, and Aiding Contractors: Simpson Strong-Tie's Solutions to the Industry's Problems

*cont'd from pg 4*

The evening's education will feature:

1. Historical background on their company and their service to the construction industry
3. New products for residential and light commercial construction
  - Strong Frame Moment Frames
  - Structural Steel Connections
  - Strong-Wall Shear Walls
  - Cold-Formed Steel Connectors and Commercial Clips
  - Radius Track for Curved Framing Solutions
3. Strong-Rod Systems for Continuous Rod Tie-Downs
4. Anchors and Fasteners for Concrete and Masonry including Epoxies
5. Education and Training Programs
6. Ready Access to Sales Representatives to Solve Problems with Effective Solutions

Simpson Strong-Tie started from its desire to solve problems. Come out and join your San Diego ASPE membership and learn more about the tools, resources, and engineering advances Simpson Strong-Tie has made available to bridge the gap between yesterday's building standards to today's strong and smart buildings.

Complete meeting information can be found on [page 1](#).

Lisa Thibodeaux, Construction Experts, Inc.  
ASPE San Diego Chapter #4 Programs Chair

## Ask a CPE: Q & A

Responses from John Balistreri, CPE—Kaiser Permanente Construction



*John Balistreri CPE*

1. *When did you get the CPE certification?* October 2012
2. *What made you take CPE certification?* I wanted to be recognized as a Professional Estimator. I had taken numerous classes, and this was the next step to get a credentialed certification.
3. *How useful is it for you to have the CPE certification?* The Certification along with my experience is another validation to my peers and management that I currently work with, that I am a Professional Estimator.
4. *What do you suggest to other estimators regarding getting certified?* Becoming a Certified Professional Estimator is one of the few credentialed programs that tests your skills as an estimator. This is a nationally-recognized program that validates your skill set among your peers as a Professional Estimator.
5. *Brief description of your certification process, estimating life and any other comments?* I have worked through the trades as an apprentice, became a Journeyman Painter. After 15 years, I decided to take classes (College of Extended Studies) to sharpen my skills as an assistant estimator. I have completed numerous certificate programs: Program Estimating, Construction Practices, Construction Supervisory Technologies, Construction Supervisory Project Management. I had passed the Estimating Proficiency II Exam, endorsed by the ASPE. For me to advance in my career, my immediate supervisor encouraged me to become a CPE. With this credential, I was promoted to a Chief Estimator for Kaiser Permanente San Diego Service Delivery Team.

For more information about the CPE certification, please contact Dan Kilcoyne CPE ([dan@calpanelsystems.com](mailto:dan@calpanelsystems.com)) or Venu Dorapally CPE ([venuarch@gmail.com](mailto:venuarch@gmail.com)).



# Recap Article about the February '19 Joint ASPE/NAWIC Dinner Meeting: "The Children's Zoo Project"

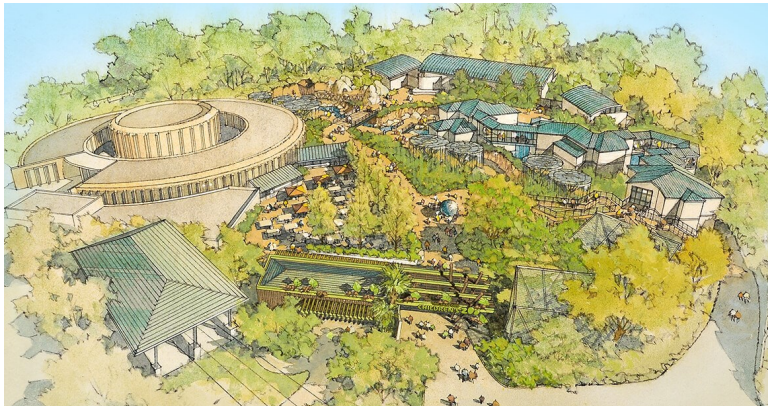


by Frank E. Young, FCPE

Over the years, San Diego Chapter #4 has been privileged to visit the San Diego Zoo in Balboa Park and the Wild Animal Park in San Pasqual Valley for Site Tours and presentations about new exhibits at both locations. Needless to say, we were delighted to learn that the Joint ASPE/NAWIC dinner meeting on February 12th would feature a preview for the upcoming renovation of the Children's Zoo. Our organization has had an excellent relationship with the Zoo staff, and the former Director of Construction Operations, Jack Eve (deceased), was a former member and Chapter President. Member-firms have completed work on various unusual and difficult projects at both facilities.



Frank Young FCPE



With only 16 members and guests from ASPE, we were completely overwhelmed in numbers by the 70 NAWIC members and guests. Their group should be applauded for the ability to attract individuals to attend their events. Older San Diego Chapter members may recall that many years ago that ratio was reversed when we had a robust membership who supported our functions with 40-50 participants. Hopefully, some of the newer people in the Chapter can help renew that interest in our own educational efforts.

**Steve Fobes**, Architect with the San Diego Zoo,

gave a comprehensive talk, aided by his PowerPoint slides to illustrate the four different zones within the two-acre Children's Zoo:

- |                  |   |
|------------------|---|
| Desert           | Just beyond the entrance, visitors will encounter the dung beetle fountain, a rope climb, and an animal care facility adjacent to the exhibit featuring prairie dogs, burrowing owls, and fennec foxes.   |
| Temperate Forest | East of the desert, visitors will see a 25-foot high accessible treehouse surrounded by the exhibit for coatis (member of the raccoon family) and Patagonian cavies (a rodent resembling a cross between a rabbit and a small deer).  |
| Wetlands Marsh   | On the south side, visitors will find a walk-through aviary, a building housing reptiles, amphibians, and fish, and a two-story structure serving as an "animal ambassador" where animals and keepers will prepare for their walks around the zoo and trips offsite to visit schools and hospitals. |
| Tropical Forest  | The west side of the compound contains a treetop walkway through the 70-foot tall ficus trees, and the invertebrate and subterranean building exhibiting the beehive, flying insects, and a naked mole rat tunnel.  |

The Children's Zoo represents the largest project undertaken by the Zoo in Balboa Park. Philanthropist T. Denny Sanford's \$30,000,000 donation will help fund the design and construction of the \$71,000,000 facility. Mark Stuart, President of the Foundation of San Diego Zoo Global, has stated that "this project is the most ambitious ever undertaken at the San Diego Zoo and will result in a one-of-a-kind children's zoo for the 21<sup>st</sup> century." Construction will begin this summer and should be completed by Spring of 2021. In the interim period, visitors will observe a \$5M renovation to the Komodo Dragon exhibit, and a \$4M walk-through aviary with different species of humming birds.

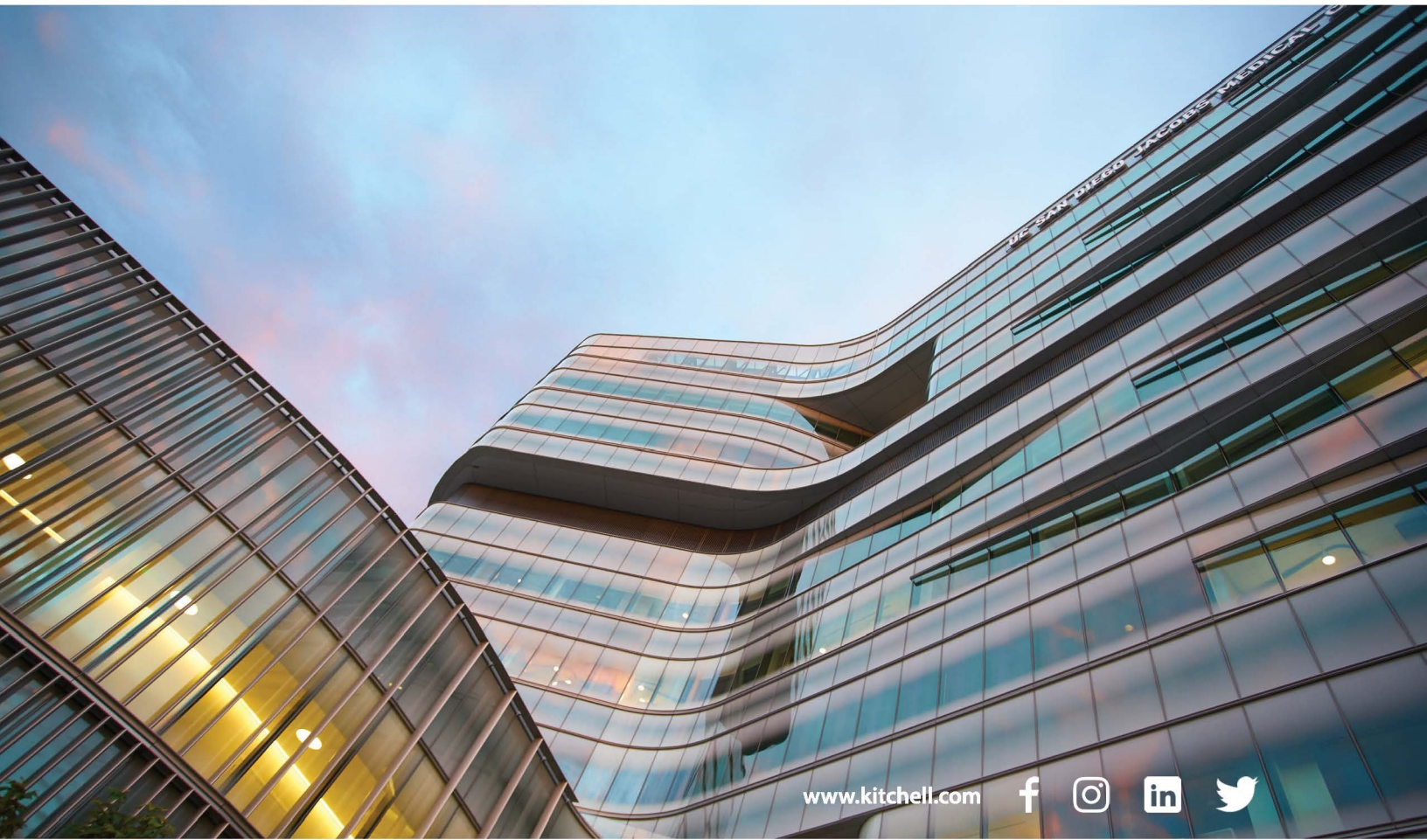
We thank Steve Fobes for taking time out of his busy schedule to address the joint meeting and provide an insight into this challenging building program.

Frank E. Young, FCPE—ASPE San Diego Chapter #4 Programs Committee



▶ **OVER 65 YEARS OF BUILDING VALUE**

Ten years after its doors opened in the 1950s, Kitchell pioneered the construction management approach in the western U.S. and quickly established a reputation for expertise in the management of complex commercial, industrial and institutional building projects. Today, we are leaders in the real estate and construction sectors, from concept through ribbon-cutting and beyond.



[www.kitchell.com](http://www.kitchell.com)



**TOGETHER, BUILDING VALUE EVERY DAY.**



# Spring Semester 2019 Online Construction Classes Begin April 8, 2019



The following article contains information about online construction courses offered at San Diego State University and selected non-profit construction industry organizations. **Classes start April 8, 2019.** Registrations are currently being accepted by all providers.

Registration options for Spring 2019 classes include:

- |  |  |
|--|--|
| * 101 Introduction to Construction Estimating      | * 201S Leadership and Motivation (STP Unit 1)                        |
| * 102 Essential Construction Math                  | * 203P Construction Problem Solving and Risk Management (STP Unit 6) |
| * 103 Construction Blueprint Reading               | * 205T Planning and Scheduling (STP Unit 3)                          |
| * 105 Estimating and Bidding 1                     | * 206T Construction Productivity and Cost Management (STP Unit 5)    |
| * 106 Estimating and Bidding 2                     | * 308 Construction Project Management                                |
| * 107 Construction Materials and Processes         |  |
| * 109 Practical Applications of Civil Construction |  |
| * 110 Civil Blueprint Reading and Materials        |  |

## **101 INTRODUCTION TO CONSTRUCTION ESTIMATING** (online)

Learn the basic principles of construction estimating. Topics to be studied include: organization of the estimate, types of estimates, elements of an estimate, quantity take-off techniques, pricing techniques, adjusting the estimate for a variety of variable factors, estimating labor, materials and equipment, and profit and overhead markups. Students will learn about the different types of estimates and how to organize an estimating document. This course will build a foundation of knowledge that the student will use while estimating virtually any individual trade or project type.

MORE ... <http://www.constructionclasses.com/online/course-list/101-introduction-construction-estimating/>

## **102 ESSENTIAL CONSTRUCTION MATH** (online)

This class is intended to develop mathematical skills that can be applied to the construction trades through practice and application. This course is an introduction to other courses in construction. While this class is not a prerequisite for any other classes, it does provide a foundation for them.

MORE ... <http://www.constructionclasses.com/online/course-list/102-construction-math/>

## **103 CONSTRUCTION BLUEPRINT READING** (online)

Learn how to read architectural, structural, civil, mechanical and electrical blueprints. Students will practice looking up information and solving common construction problems by reading the blueprints. This course is designed to provide foundational knowledge and practice at reading blueprints.

MORE ... <http://constructionclasses.com/online/course-list/103-construction-blueprint-reading/>

## **105 ESTIMATING AND BIDDING 1** (online)

This course features hands-on estimating and quantity take-off activities associated with General Conditions, Earthwork, Site Work, Concrete and Masonry. By the end of this class, students should be able to plan for and organize an estimate, estimate the cost of general conditions, prepare quantity take-off of excavation and backfill, prepare a quantity take-off of concrete and formwork, use unit prices to price an estimate, and prepare a quantity take-off and conceptual estimate of masonry work.

MORE ... <http://constructionclasses.com/online/course-list/105-estimating-bidding-1/>

## **106 ESTIMATING AND BIDDING 2** (online)

This course features hands-on estimating and quantity take-off activities associated with Metals, Wood, Doors and Windows, Finishes, Electrical, and Mechanical Estimating. By the end of this class, students should be able to perform quantity take-offs and conceptual estimating for structural and miscellaneous metals, rough carpentry and framing, waterproofing and roofing, various finish trades, as well as utilize conceptual estimating methods to arrive at mechanical and plumbing budgets and electrical budgets.

MORE ... <http://constructionclasses.com/online/course-list/106-estimating-bidding-2/>

*[\(cont'd on pg 9\)](#)*



## **107 CONSTRUCTION MATERIALS AND PROCESSES** (online)

Learn about quality control procedures for various materials, material manufacturing processes, and the physical limitations of the materials being studied. The regulatory environment under which materials are manufactured and incorporated into new structures will be studied.

MORE ... <http://www.constructionclasses.com/online/course-list/107-construction-materials-processes/>

## **109 PRACTICAL APPLICATIONS OF CIVIL CONSTRUCTION** (online)

The purpose of this course is to give students an overall understanding of construction equipment and selected construction methods. This includes selection, economy and productivity of common construction equipment and construction procedures for site development and industrial, heavy and civil construction.

MORE ... <http://constructionclasses.com/online/course-list/109-applications-civil-construction/>

## **110 CIVIL BLUEPRINT READING AND MATERIALS** (online)

This course introduces students to estimating civil engineering, heavy construction projects, and sitework construction projects. This course will cover reading and understanding civil construction plans, determining earthwork quantities, determining crew make-up, and fundamentals of estimating various civil and sitework components.

MORE ... <http://constructionclasses.com/online/course-list/110-civil-site-work-blueprint-reading/>

## **201S LEADERSHIP AND MOTIVATION** (online)

Learn how to recognize your style of leadership and how to utilize other styles when appropriate. The effect that attitudes and abilities have on job performance and how to positively influence attitudes and abilities will be studied. The leader as goal setter, communicator and role model will all be discussed. Job site applications of all subjects will be stressed. MORE ... <http://constructionclasses.com/online/course-list/201s-leadership-motivation-stp-unit-1/>

## **203P RISK MANAGEMENT AND PROBLEM SOLVING, STP 6** (online)

Learn how to identify, prevent, and solve construction problems. Subjects include identifying the source of problems, barriers to problem solving and symptoms that often mask the real problem. Human performance problems, scheduling problems, and technical problems will be covered. The 6-step method of problem solving and decision making will be stressed.

MORE ... <http://constructionclasses.com/online/course-list/203p-risk-management-problem-solving-stp-unit-6/>

## **205T PLANNING AND SCHEDULING, STP 3** (online)

Learn how to plan, prepare and update construction project schedules in this course. Construction planning will be studied, as well as practice on preparing a project plan. Through the use of case studies, students will learn how to define construction activities, determine activity duration, and assemble the activities into a logical construction schedule. Students will also learn to create and use bar charts and critical path schedules.

MORE ... <http://constructionclasses.com/online/course-list/205t-planning-scheduling-stp-unit-3/>

## **206T CONSTRUCTION PRODUCTIVITY AND COST MANAGEMENT, STP 5** (online)

Students will learn the skills necessary for effective control of construction costs at the job site. They will study construction cost and apply principles and practices associated with cost awareness and production control to each element of the project. MORE ... <http://constructionclasses.com/online/course-list/206t-productivity-cost-mgt-stp-unit-5/>

## **308 CONSTRUCTION PROJECT MANAGEMENT**

This course will provide a framework for understanding the project manager's roles, responsibilities, processes and procedures. Students will learn the stages of the project, dispute resolution, project financing, feasibility, bidding and contracting. MORE ... <http://constructionclasses.com/online/course-list/308-construction-project-management/>

To learn more about online CERTIFICATE PROGRAMS, go to:

<http://constructionclasses.com/online/certificate-programs/>

**QUESTIONS?** Send an email to Lisa Thibodeaux at [Lisa@ConstructionClasses.com](mailto:Lisa@ConstructionClasses.com) or visit the Frequently Asked Questions page at <http://constructionclasses.com/online/potential-student-faq/>. ■

# Become an ASPE Newsletter Corporate Sponsor or Advertiser

## CORPORATE SPONSOR—\$400/yr Includes following benefits:

- Sponsor Recognition in 12 Monthly Newsletters and on Chapter Website, GIFS Wheel
- Full-Page Sponsor Profile in 1 Issue
- Hot Link to Sponsor's Website or Designed Email Address

## INDIVIDUAL BUSINESS CARD AD—\$200/yr

### EMPLOYMENT AD:

**\$70 /ad in 1 issue; \$100/ad on website  
FREE TO ASPE MEMBERS!**

### FOR MORE INFO—CONTACT:

Treasurer: **FRANK YOUNG FCPE**  
Cell 619.980.4025; [pancho77@cox.net](mailto:pancho77@cox.net)

P.R. Chair: **JOE HERNANDEZ**  
619.717.1814;  
[joehernandez777@yahoo.com](mailto:joehernandez777@yahoo.com)



## ASPE MISSION STATEMENT

The American Society of Professional Estimators  
is dedicated to the promotion of  
the profession of estimating and to  
the benefit of the construction industry.

[Click here](#) for ASPE's CODE OF ETHICS.

## ASPE Membership

An accurate cost estimate is the first of many key components of a successful construction project. Plan interpretation, labor and material costs, scheduling costs, and level of difficulty recognition are a fraction of the skills necessary to become a successful estimator.

Why join the American Society of Professional Estimators? ASPE is the most recognized and credentialed group of construction cost professionals in our nation's construction industry. ASPE provides education, industry information, and fellowship to all levels of our members. It is made up of professionals in the following three member classifications.

- 1- **Estimator:** Shall be an active Construction Estimator in one or more of the construction estimating disciplines.
- 2- **Affiliate Member:** Shall be employed in a construction-related field.
- 3- **Student:** Shall be a full-time student actively pursuing a curriculum leading to a degree or certificate in a construction-related field.

One of the ultimate goals of a member in ASPE is to achieve status as a "Certified Professional Estimator," otherwise known as "CPE." CPE status is recognized by Builders, Government Agencies, [joehernandez777@yahoo.com](mailto:joehernandez777@yahoo.com)

Developers, and many other Corporate entities as the highest level of qualification as an estimator. Educational training is available to become part of this elite group of professionals.

ASPE San Diego Chapter #4 is perennially recognized as one of the top chapters of the nation's 50 chapters. The local chapter meets on the third Tuesday of each month. This general membership meeting offers education and insight into our industry. Each membership meeting is highlighted by presentations and guest speakers, with information pertinent to our ever-changing industry.

If you would like to become part of this exciting group of professionals, please contact Venu Dorapally CPE at 858.947.5197 or:

[venuarch@gmail.com](mailto:venuarch@gmail.com)

# San Diego Chapter #4 Calendar of Events



- ◆ **Friday-Saturday, March 8-9, 2019**  
**ASPE Joint Northwest/Southwest Regional Meeting**  
**Location:** Drury Inn & Suites Denver Stapleton  
4550 N Central Park Blvd, Denver, CO 80238
- ◆ **Tuesday, March 19, 2019 (5:15 PM Registration)**  
**ASPE San Diego Monthly Dinner Meeting**  
**Program:** Building Strong—Innovative Resources and Industry Insights to Help Construction Professionals  
**Speaker:** Representatives from Simpson Strong-Tie  
**Location:** Hunter Steakhouse  
2445 Hotel Circle Place N., San Diego
- ◆ **Tuesday, March 26, 2019 (5:30-7:30 PM)**  
**ASPE San Diego Monthly Board Meeting**  
**Location:** Offices of Balfour Beatty  
10620 Trenea Street, Ste 300, San Diego  
(East of I-15, South of Mira Mesa Blvd)
- ◆ **Tuesday, April 16, 2019 (4:30 PM Registration)**  
**ASPE San Diego Monthly Site Tour Dinner Meeting**  
**Program:** Legacy International Center in Mission Valley  
**Site Tour** Representatives from  
**Hosts/Speakers:** Clark Construction Group  
**Jobsite** Hotel Circle South, San Diego  
**Location:**  
**Dinner** Catered Dinner by Phil's BBQ at the Jobsite  
**Venue:**
- ◆ **Tuesday, April 30, 2019 (5:30-7:30 PM)**  
**ASPE San Diego Monthly Board Meeting**  
**Location:** Offices of Balfour Beatty  
10620 Trenea Street, Ste 300, San Diego  
(East of I-15, South of Mira Mesa Blvd)
- ◆ **Tuesday, May 21, 2019 (4:15 PM Registration)**  
**ASPE San Diego Monthly Dinner Meeting**  
**Program:** Future Redevelopment of Seaport Village  
**Tentative** Yehedi Gaffen, CEO  
**Speaker:** GAFCON, Inc.  
**Location:** The Butcher Shop  
5255 Kearny Villa Road, San Diego
- ◆ **Tuesday, June 4, 2019 (5:30-7:30 PM)**  
**ASPE San Diego Monthly Board Meeting**  
**Location:** Offices of Balfour Beatty  
10620 Trenea Street, Ste 300, San Diego  
(East of I-15, South of Mira Mesa Blvd)
- ◆ **Tuesday, June 11, 2019 (4:15 PM Registration)**  
**NOTE REVISED MEETING DATE TO SECOND TUESDAY ...  
ONE WEEK EARLIER THAN USUAL**  
**ASPE San Diego Monthly Site Tour Dinner Meeting**  
**Tentative** Office Tour and Presentation  
**Program:** on Cost Estimating  
**Office Tour** Representatives from  
**Hosts/Speakers:** Cumming Corporation  
**Location:** 15015 Avenue of the Sciences, Ste 160  
San Diego (Carmel Mountain)  
**Dinner** Catered Dinner by  
**Venue:** Rubio's Coastal Grille
- ◆ **Wednesday-Saturday, June 19-22, 2019**  
**ASPE Annual Meeting and Estimating Summit**  
**Location:** Doubletree Hotel by Hilton Kansas City  
10100 College Blvd, Overland Park, KS 66210
- ◆ **Tuesday, June 25, 2019 (5:30-7:30 PM)**  
**ASPE San Diego Monthly Board Meeting**  
**Location:** Offices of Balfour Beatty  
10620 Trenea Street  
Ste 300, San Diego  
(East of I-15, South of Mira Mesa Blvd)





# Directory of San Diego Chapter #4 Officers and Directors



**TECHNICAL COMMITTEES:**

- Certification:**  
Dan Kilcoyne, CPE
- Education:**  
Steve Schraibman, CPE
- Standards:**  
OPEN
- STANDING COMMITTEES:**
- Chapter Awards**  
Frank Young, FCPE
- National Awards**  
OPEN
- Nominations:**  
OPEN
- Communications—  
Website:**  
Paul Chang, CPE
- Communications—  
Newsletter:**  
Alicia Kovacs
- Finance:**  
Frank Young, FCPE
- Ways & Means:**  
David Luhm, E
- Public Relations/  
Calendar:**  
Joe Hernandez, E
- Membership:**  
Venu Dorapally, CPE
- Programs:**  
Lisa Thibodeaux
- OTHER COMMITTEES:**
- Ethics:**  
Dan Luckhardt, CPE
- Mentoring:**  
Frank Young, FCPE
- Scholarships:**  
Dan Luckhardt, CPE
- Outreach:**  
Paul Chang, CPE

## 2019-20 Chapter Officers

Office	Officer	Phone	Fax	Email
<b>President</b>	Paul Chang, CPE Balfour Beatty	858.635.7464 619.513.4399-C		<a href="mailto:aspechapter4@outlook.com">aspechapter4@outlook.com</a>
<b>1<sup>st</sup> Vice-President</b>	Steve Schraibman, CPE Arcor-Inc.	858.481.4494 619.252.4941-C	858.481.4146	<a href="mailto:steve@arcor-inc.com">steve@arcor-inc.com</a>
<b>2<sup>nd</sup> Vice-President</b>	Dan Luckhardt, CPE Swinerton Builders	619.291.4600 858.342.8017-C		<a href="mailto:dluckhardt@swinerton.com">dluckhardt@swinerton.com</a>
<b>3<sup>rd</sup> Vice-President</b>	OPEN			
<b>Secretary</b>	David Luhm, E Countywide Mechanical	760.238.3355-C		<a href="mailto:dluhm@countywidems.com">dluhm@countywidems.com</a>
<b>Treasurer</b>	Frank E. Young, FCPE Ramos Consulting Svcs	619.440.5517 619.980.4025-C	619.401.7545	<a href="mailto:pancho77@cox.net">pancho77@cox.net</a>
<b>Immediate Past President</b>	Michael Moyers, CPE Best Interiors, Inc.	858.737.7316 619.843.6962-C	858.737.7317	<a href="mailto:michael.moyers@bestinteriors.net">michael.moyers@bestinteriors.net</a>
<b>Executive Administrator</b>	Margy Ashby	619.749.1890 619.593.9988 619.302.3257-C	619.839.3817	<a href="mailto:info@aspechapter4.org">info@aspechapter4.org</a> <a href="mailto:asped4@gasvcs.net">asped4@gasvcs.net</a>

## 2019-20 Chapter Board of Directors

Director	Phone	Fax	Email
Venu Dorapally, CPE Kitchell Contractors, Inc.	858.947.5197		<a href="mailto:venuarch@gmail.com">venuarch@gmail.com</a>
Joe Hernandez, E Kitchell Contractors, Inc.	619.717.1814		<a href="mailto:joehernandez777@yahoo.com">joehernandez777@yahoo.com</a>
Dan Kilcoyne, CPE California Panel Systems	619.562.7010		<a href="mailto:dan@calpanelsystems.com">dan@calpanelsystems.com</a>
Alicia Kovacs Nielsen Construction Ca.	619.820.3057-C	619.795.0042	<a href="mailto:akovacs@nielsencc.com">akovacs@nielsencc.com</a>

### CONTACT ASPE SAN DIEGO CHAPTER

Phone: 619.749.1890 Email: [info@aspechapter4.org](mailto:info@aspechapter4.org)

Chapter Website: [aspechapter4.org](http://aspechapter4.org) National Website: [aspenational.org](http://aspenational.org)

# Certification and Professional Development Units (PDUs)

Your Certification Committee came together to write this article outlining the four (4) Professional Development Unit (PDU) Categories. We had the intent to point out just how easy it is to acquire 30 PDU credits each year.

Professional Development Units (PDUs) are simply a validation that we, as Certified Professional Estimators, are actively fulfilling our responsibilities to our fellow CPEs and to the cost estimating profession. This is a benefit to each of us, our Society, and those we serve.

ASPE may require more PDUs than other comparable organizations; however, we also offer more opportunities to obtain PDU credits. Remember, to fulfill the CPE Renewal requirements, PDUs must be earned in more than one Category. The following outline describes each Category.

## CATEGORY 1: CONTINUING EDUCATION/TRAINING

If you have attended a workshop, seminar, educational class, or informative meeting that is relevant to Estimating, you will meet the requirements of Category 1. The majority of activities in this Category earn you 0.5 to 1.0 PDU credit per hour of attendance.

### Examples

- **Webinar/DVD/Webcast:** If you are learning and attend for 2 hours, 1 PDU credit is earned
- **Lunch & Learn:** If you are learning and attend for 2 hours, 1-2 PDU credits are earned
- **Academic Courses/College or Trade School** (online or in person): 2 hours of coursework earn you 2 PDU credits

## CATEGORY 2: AUTHORSHIP, PRESENTATION, TEACHING

If you wrote an article for a periodical, paper or book; if you delivered a presentation; or if you served as an instructor for an industry-related course, you will earn at least 1 PDU per hour. Remember, in this category, you are also able to claim equal credit for your prep time.

- Reviewing Technical Paper(s) for Candidates in the Certification Program will earn you 4 PDU credits
- If you create a blog and submit it to the SBO and it is published, you will earn 0.25 PDU credits for each published blog.
- Instructing or teaching a class or presentation on estimating.

## CATEGORY 3: PROFESSIONAL ORGANIZATIONAL ACTIVITIES

Do you have an industry related certificate or license, perform in a leadership role in your Chapter or Region, or serve on an industry related professional committee? This Category also includes ASPE Chapter Meetings, attendance at Regional Meetings, and participation in Summit activities.

- Attendance and participation in Chapter/Regional or ASPE sponsored meeting, workshops, etc. will earn you 1-3 PDUs depending on the time and level of participation or educational opportunity.
- Professional Membership with other industry related organizations (examples, AACE International, CSI) will earn you 1 PDU per active membership.
- Elected leadership role for Chapter or other ASPE organizations can be 3-5 PDUs annually.

## CATEGORY 4: OTHER PROFESSIONAL ACTIVITIES

If you are more community minded and share your estimating knowledge and skills in your community, you will be awarded PDUs for court mediation, awards of professional excellence, and volunteering.

- Community volunteer work (relevant to estimating) provides you 1 PDU per hour.
- Media interview, source of press release (live or in print, relevant to estimating) earns you 1 PDU per instance, published article.
- Volunteer job training activities related to the estimating profession earn you 1 PDU per hour.
- If you support a CPE Candidate and act as a proctor for their GEK or DST Exam, you will earn 2 PDU credits per exam that you proctor.

**For questions or assistance, please contact [Certification@ASPENational.org](mailto:Certification@ASPENational.org). The Certification Team will be happy to guide you through the process.**

# 2018 CERTIFICATION PROGRAM CHANGES

## Effective 07/01/2018

The ASPE Board of Directors, together with the Certification Committee, has unanimously approved the following updates/changes to the ASPE Certification Program.

### ● CPE Candidate: Fails – 2 Attempts / Carry-Forward Passing Grade(s) to Reapplication

- ▲ **Approved:** Candidate will be allowed to carry-forward Passing Grade(s) and re-take failed/or incomplete portion of the Certification Program ONLY if ...
  - Candidate reapplies in 6-12 Months from the month that the fail occurred AND
  - Candidate must complete the failed/or incomplete portion within three (3) months from the re-application acceptance date
- ▲ **Note:** DST Part 1 and DST Part 2 are separate tests but are weighted as 1 item. If Candidate fails either Part of the DST Exam, both Part 1 and Part 2 must both be retaken
- ▲ **Note:** Candidate must earn a score of 70% on DST Part 1 and DST Part 2 of the DST Exams
- ▲ Incentive for Applicant to reapply and continue in the Certification Program toward CPE designation

### ● CPE Candidates: Fails – 2 Attempts / Requires 6-Months Waiting Period prior to Reapplication

- ▲ **Approved:** Offer \$100 Credit to Application Fee if Candidate reapplies in 6-12 Months
- ▲ Incentive for Applicant to reapply and continue in the Certification Program toward CPE designation

### ● PDU Requirements

- ▲ **Approved:** Reduce from 30 PDUs to 24 PDUs Annually
- ▲ PDUs do not carry over into subsequent years
- ▲ **Effective Date:** Cycle Start Date 01/01/2019

### ● CPE Renewal Period

- ▲ **Approved:** Annual Renewal vs every 3-years
- ▲ **No Change in Fees/Renewal Fees:** \$50 Annually
- ▲ **Effective Date:** Scaled/Beginning with 2018 Cycle Renewals
  - 2018 Renewals/Extend 5 Months from 07/31/2018 Cycle End to a 12/31/2018 Cycle End
  - 2019 Renewals/Extend 5 Months from 07/31/2019 Cycle End to a 12/31/2019 Cycle End
  - 2020 Renewals/Extend 5 Months from 07/31/2020 Cycle End to a 12/31/2020 Cycle End

### ● CPE Renewal Date

- ▲ **Approved:** Adjust to Annual Cycle End Date of 12/31
- ▲ Coincide with Membership Renewal
- ▲ **Effective Date:** Scaled/Beginning with 2018 Cycle Renewals
  - 2018 Renewals / Extend 5 Months from 07/31/2018 Cycle End to a 12/31/2018 Cycle End
  - 2019 Renewals / Extend 5 Months from 07/31/2019 Cycle End to a 12/31/2019 Cycle End
  - 2020 Renewals / Extend 5 Months from 07/31/2020 Cycle End to a 12/31/2020 Cycle End

### ● CPE On-Time Renewal: Cycle End Date vs Expiration Date

- ▲ **Approved:** Dates to be the Same
  - No longer 12-Month Grace Period to submit PDUs



- ▲ **Only a 30-Day Grace Period for Renewal (for submission of PDUs)**
- ▲ After 30-Day Grace Period Expires = Late Renewal or Reactivation will be required
- ▲ **Effective Date:** Scaled/Beginning with 2018 Cycle Renewals
  - 2018 Renewals/Extend 5 Months from 07/31/2018 Cycle End to a 12/31/2018 Cycle End
  - 2019 Renewals/Extend 5 Months from 07/31/2019 Cycle End to a 12/31/2019 Cycle End
  - 2020 Renewals/Extend 5 Months from 07/31/2020 Cycle End to a 12/31/2020 Cycle End
- **CPE: Late Renewal Fees**
  - ▲ **Approved:** \$50/Calendar Month Penalty until required PDUs are submitted
  - ▲ **Effective Date:** Cycle Start Date 01/01/2019
- **CPE Reactivation**
  - ▲ **Approved:** \$1,500 Reactivation Fee
  - ▲ **Approved:** This is a one-time only option available to a CPE
  - ▲ **Must occur within 2-Years after Cycle End Date**
  - ▲ No PDUs required during Reactivation
  - ▲ **After Reactivation, PDU requirements will continue in order to maintain CPE Certification**
  - ▲ **Effective Date:** Cycle Start Date 01/01/2019
- **CPE Lifetime Status**
  - ▲ **Approved:** With CPE Renewal accomplished Annually, Lifetime Status will require 14 consecutive On-Time Renewals (= 15 Years as CPE in good standing with Membership in Good Standing)
  - ▲ Time starts over at 0 Years as CPE, if/when a CPE has been Revoked or granted Amnesty
  - ▲ **Implementation:** Application review required by Certification Team



## ASPE CORE PURPOSE

ASPE is the construction industry's leader and recognized authority in professional estimating through excellence in Education, Certification, and Standardization.

## ASPE CORE VALUES

### Education:

ASPE educates and mentors professional estimators for the sustainability of the construction industry.

### Professionalism:

ASPE promotes the lifelong pursuit of excellence and credibility in professional estimating.

### Fellowship:

ASPE develops a fellowship of professional estimators that connects and leads the construction industry.

# CALLING ALL GIRLS Grades 8-12

## Hands-on Construction Camp

**JUNE 17—June 21, 2019**

**8am—4pm**



at: Associated General Contractors  
Apprenticeship Training Facility  
6212 Ferris Square, SD 92121

The National Association of Women in Construction is ramping up for Camp NAWIC 2019. Join us for a FREE, week-long summer day camp.

Attendees have the opportunity to build take-home projects from the lessons in carpentry, electrical, solar energy, plumbing, and sheet metal. Operating heavy construction equipment and surveying are two of the favorite activities! Ladies, have fun with your friends for a whole week!

At graduation on Friday, you and your parents are invited for a barbeque lunch and a grand celebration!

**Learn more/Register at <http://bit.ly/CampNAWIC>**

